

A— 液压刀柄

百斯图工具制造有限公司

华东区域	East China Area	+0086 189 0219 0578
华北区域	North China Area	+0086 180 2001 0358
华中区域	Central China Area	+0086 189 0210 1516
东北区域	Northeast Area	+0086 133 3205 6691
西南区域	Southwest Area	+0086 189 0210 1516
西北区域	Northwest Area	+0086 133 5207 3018
广东区域	Guangdong Area	+0086 153 3200 8595
山东区域	Shandong Area	+0086 189 2021 6828
外贸销售	Export Sales	+0086 189 2008 0858

☎022-60379917 📍天津市武清区京滨工业园京滨大道99号
✉softool.sale@cxtc.com 🌐www.xtc-softool.com



公众号二维码 视频号二维码

A— HYDRAULIC CHUCK



百斯图工具制造有限公司
SOFTOOL MANUFACTURING CO., LTD.

2023 - V2

A—液压刀柄

A - Hydraulic Chuck



公司简介 COMPANY PROFILE

百斯图工具制造有限公司位于天津京滨工业园区，隶属于厦门钨业股份有限公司，新厂进行现代规模化投资并于2020年底投入使用，新厂配有多条自动化标准品产线，配备全套进口热处理、表面处理设备线，年产能达60万件。是一家专注于金属切削刀体的高新技术企业。

As a member of Xiamen Tungsten Co., Ltd., SofTool Manufacturing Co., Ltd. is located at Jingbin industrial park in Tianjin. With modern scale investment, the new plant has been put into use at the end of 2020. With multiple automated production lines, a full set of advanced heat treatment, surface processing equipment lines, the annual production capacity is expected to reach 600 thousand pieces, we are a high-tech enterprise focusing on metal cutting tool bodies.

集产品研发、工艺设计、生产制造、OEM/ODM代工、产品销售为一体的钢制品制造企业，为全球客户专业提供PSC产品、铣刀体、钻杆、镗刀、液压刀柄、热装刀柄、曲轴、型线刀具等产品及个性化专属解决方案，产品应用覆盖了风（核）能发电、模具制造、汽车、工程机械、铁路、石油化工等各个领域。

As a steel product manufacturing enterprise integrating product research and development, process design, manufacturing, OEM/ODM, and product sales, we provide professional cutter tools and personalized and exclusive solutions for PSC product, milling tool bodies, drilling stem, boring tools, shrink-fit chuck, hydraulic chuck, crank shaft for global customers. Our products are applied in wind (nuclear) power generation, mold manufacturing, automobiles, construction machinery, railways, petrochemicals and other fields.



V 愿景 ision

构建全球刀具行业的协助平台，
成为世界具有影响力的刀具企业。

To build a global synergistic platform
for the cutting tools,
to be one of the influential tool body
manufacturing companies.

M 使命 ission

引领刀体行业的健康发展；
助力刀具企业的产业升级。

Leading the healthy development for
the tool body industry;
expediting the industrial upgrades
for the tooling companies.

C 核心价值观 ore Value

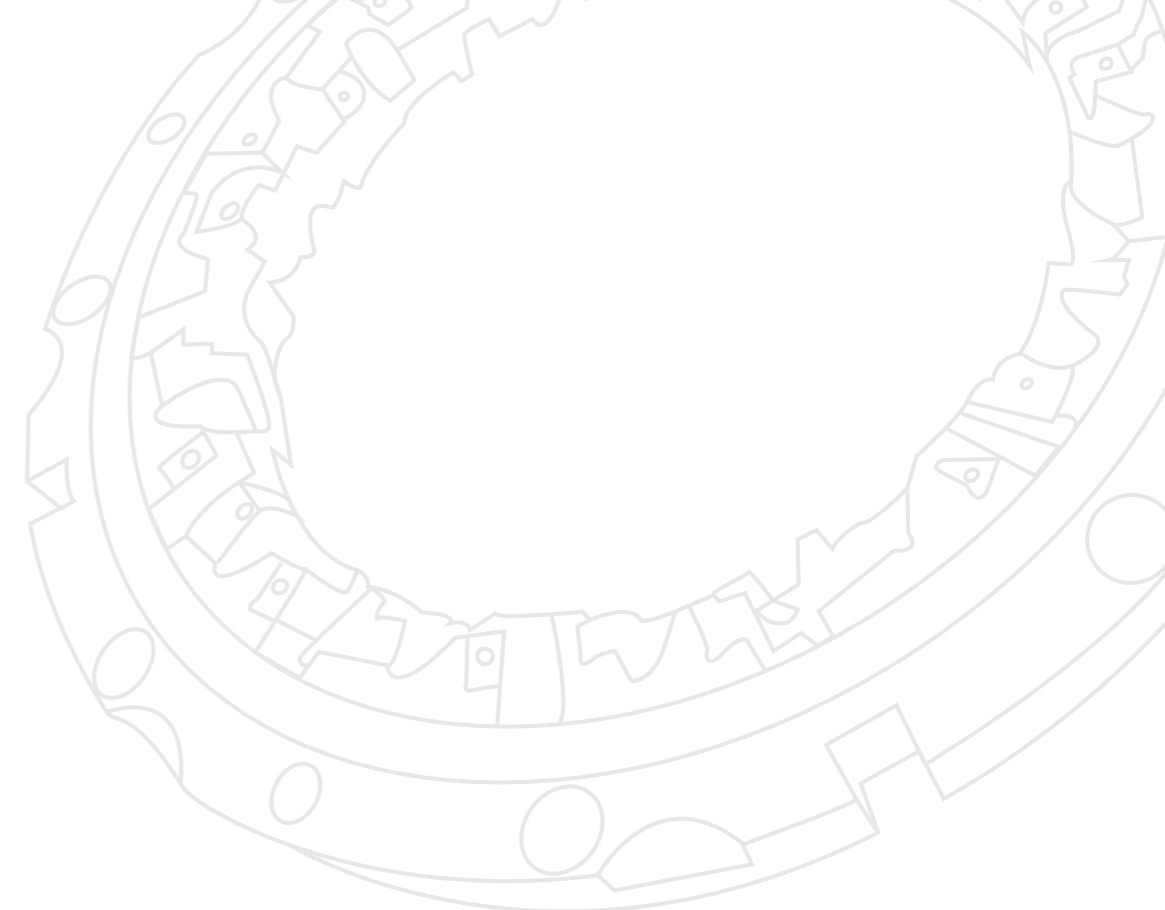
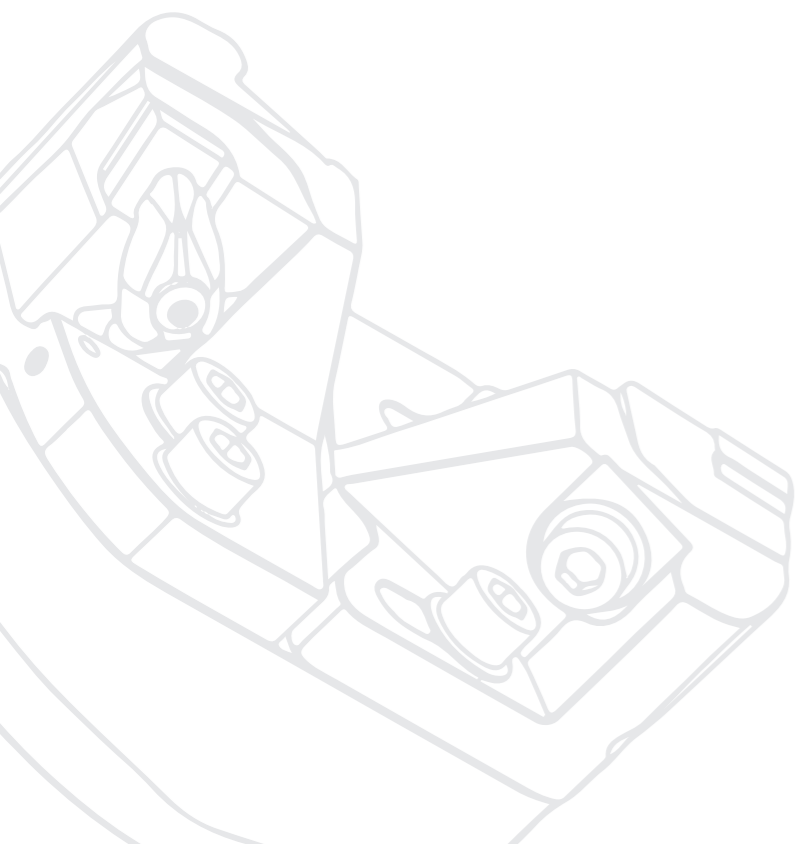
以品质铸就企业，
以利益回馈客户，
以价值成就员工。

To build the company with quality,
to reward customers with benefits,
to cultivate employees with value.

S 品牌标语 logan

是刀具更是艺术。

Tooling also arts.





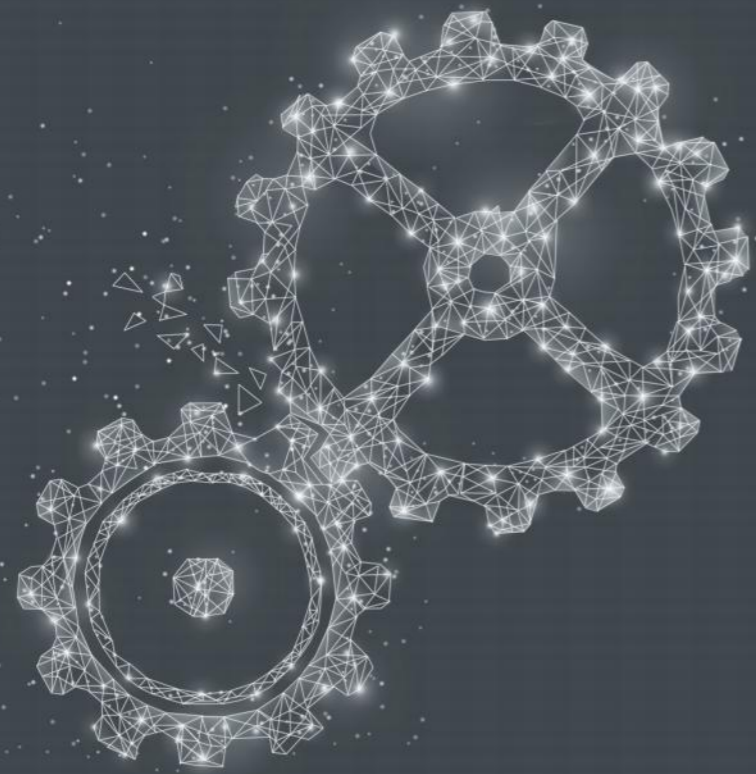
SUPERIOR SERVICE
SUPERIOR SERVICE

优质服务

SUPERIOR SERVICE

恪守“品质优先 客户至上”的服务宗旨，利用技术、产能和规模优势，为客户提供质量稳定的产品和交付快捷的服务。

Adhering to the service tenet of quality-oriented, customer first, we take advantage of technology, capacity and scale to provide customers with stable quality products and fast delivery services.



精湛技术

ADVANCED TECHNOLOGY

经验丰富的技术人才、先进设计仿真平台、先进工艺控制流程、国际进口数控设备、系统信息化管理,为客户攻坚克难,提供刀体解决方案。

In order to provide cutting tools solution and overcome difficulties for customers, experienced technical talents, high-tech design simulation platform, advanced controlling process, CNC equipment, as well as system information management are integrated.

ADVANCED TECHNOLOGY
ADVANCED TECHNOLOGY



LARGE SCALE
LARGE SCALE

更大规模

LARGE SCALE

自动化生产线、国际进口热处理、表面处理加工设备线、投资10亿、年产能60万件，满足客户对产品的多种工艺需求。

Providing customers with various processing skills, such as automated production line, advanced heat treatment, surface processing equipment line with 1 billion investment and 600 thousand capacity to meet multiple demands.

非常感谢各位查阅百斯图2023年样册。

本样册共包含5本产品样本, 详见综合目录。

关于本产品样册中刊载的产品内容, 由于进行研究开发改良, 实际产品规格可能与产品样册中的规格有所不同, 以产品实际情况为准, 请予以理解。

* 本样册所刊载所有产品均支持OEM贴牌业务。

可单独订购配件, 按需询价。

关于所刊载的产品, 带有如下标识:

● 可供现货 ▲ 交货时间短 ○ 按需求定制

Thank you very much for using the brochure from SofTool in 2023.

The brochure contains 5 product sample books in total. Please refer to the comprehensive catalog for details.

Due to the research, development and improvement, the actual product specifications may be a little different from the content in the product catalogue. The actual product will be taken as final. We highly appreciate your kind understanding.

* It supports OEM business for all products in this brochure.

The spare parts can be ordered separately. Please inquire on demand.

The published products are labeled with following logos:

● available in stock ▲ short lead time ○ on request

综合目录

COMPREHENSIVE CATALOG

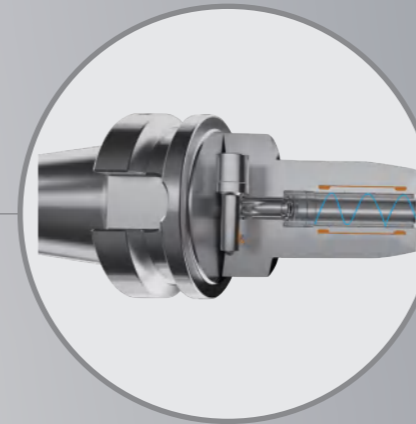
◎	A	液压刀柄	Hydraulic Chuck	01-61
	B	热装刀柄	Shrink-fit Chuck	
	C	镗刀	Boring Tools	
	D	PSC产品	PSC Product	
	E	通用刀柄	General Tool Holder	

A 液压刀柄 - 目录

HYDRAULIC CHUCK CONTENTS

● 设计特点	Design Features	A04			
● 命名方式	Naming And Coding Rules	A06			
● 通用型液压刀柄	General Purpose	A08			
通用型 BT30A	GP BT30A	A09	强力型 BT30A	HQ BT30A	A36
通用型 BT40A	GP BT40A	A10	强力型 BT40A	HQ BT40A	A37
通用型 BT50A	GP BT50A	A11	强力型 BT50A	HQ BT50A	A38
通用型 HSK32A	GP HSK32A	A12	强力型 HSK63A	HQ HSK63A	A39
通用型 HSK32C	GP HSK32C	A13			
通用型 HSK40A	GP HSK40A	A14	● 模具型液压刀柄	Mold & Die	A40
通用型 HSK40C	GP HSK40C	A15	模具型 HSK63A	DM HSK63A	A41
通用型 HSK40E	GP HSK40E	A16	模具型 SK40A	DM SK40A	A42
通用型 HSK50A	GP HSK50A	A17	● 磨刀机刀柄	Grinding Machine Chuck	A43
通用型 HSK50C	GP HSK50C	A18	磨刀机刀柄 SK50A	GM SK50A	A44
通用型 HSK50E	GP HSK50E	A19	● 减径套	Reduction Bushes	A45
通用型 HSK63A	GP HSK63A	A20	命名方式	Naming And Coding Rules	A46
通用型 HSK63C	GP HSK63C	A22	ISL12-IC	ISL12-IC	A47
通用型 HSK80A	GP HSK80A	A23	ISL20-IC	ISL20-IC	A48
通用型 HSK100A	GP HSK100A	A24	ISL25-IC	ISL25-IC	A49
通用型 SK30A	GP SK30A	A26	ISL32-IC	ISL32-IC	A50
通用型 SK40A	GP SK40A	A27	ILS12-PC	ILS12-PC	A51
通用型 SK50A	GP SK50A	A29	ISL20-PC	ISL20-PC	A52
通用型 超短型	GP Extra short design	A31	ISL32-PC	ISL32-PC	A53
通用型 PSC40A	GP PSC40A	A32	● 同步攻丝液压刀柄	Synchro Tapping Chucks	A54
通用型 PSC50A	GP PSC50A	A33	同步攻丝液压刀柄命名方式	Synchro Tapping Chucks Naming And Coding Rules	A55
通用型 PSC63A	GP PSC63A	A34	同步攻丝液压刀柄	Synchro Tapping Chucks	A56
			同步攻丝液压刀柄减径套命名方式	Synchro Tapping Chucks Reduction Bushes Naming And Coding Rules	A57
			同步攻丝液压刀柄减径套	Synchro Tapping Chucks Reduction Bushes	A58
● 强力型液压刀柄	High Torque	A35	● 配件清单	List of parts	A60

◎ 设计特点 | Design Features



液压刀柄的液压结构可以有效的吸收加工震动

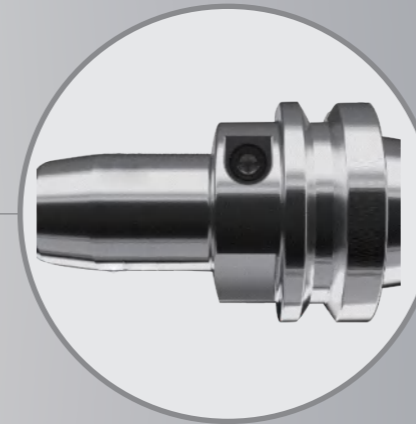
您的收益

- 减少加工时震动对机床主轴的损坏;
- 防止震动产生刀具磨损及工件损伤。

The hydraulic structure of our hydraulic chuck can effectively absorb the machining vibration;

Benefit

- Reduce the damage of vibration to the machine tool spindle during machining;
- Prevent tool wear and workpiece damage caused by vibration.



特有的表面处理工艺，打造“镜面”外观

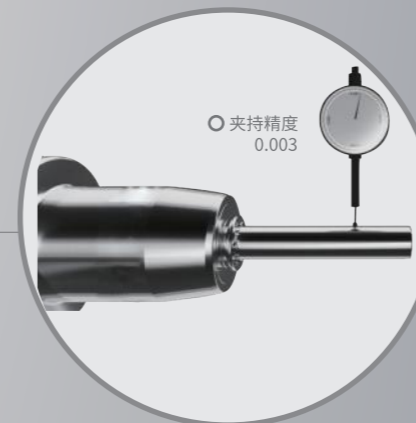
您的收益

- 延长刀柄寿命，有效防腐防锈;
- 避免刀柄在加工时被铁屑磨损。

Unique surface treatment process to create a "mirror" appearance

Benefit

- Extend the service life and effectively prevent corrosion and rust;
- Avoid being cut and worn by chip during machining.



2.5倍径处夹持孔跳动 $\leq 0.003\text{mm}$

您的收益

- 使刀具在加工过程中均匀切削;
- 提高加工工件表面光洁度;
- 延长刀具使用寿命。

Runout $\leq 0.003\text{mm}$ at 2.5D

Benefit

- Even cutting during the machining process;
- Improve the surface finish of machined workpiece;
- Prolong tool service life.

◎ 命名方式 | Naming And Coding Rules

BGP	通用型 General Purpose
BHQ	强力型 High Torque
BDM	模具型 Mold & Die
BGM	磨刀机刀柄 Grinding Machine
BTAP	同步攻丝刀柄 Synchro Tapping
BMQL	微量润滑刀柄 Minimal Quantity Lubrication

BT	30	40	50			
HSK	32	40	50	63	80	100
SK	30	40	50			
PSC	40	50	63			

01. 产品类型 | TYPE



02. 接口规格 | COUPLING TYPE

03. 法兰类型 | FLANGE TYPE

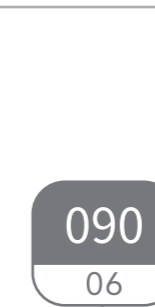
A	自动换刀中心冷却孔 Automatic change tool with center cooling hole
C	手动换刀中心冷却孔 Manual change tool with center cooling hole
E	自动换刀不带定位键 Automatic change tool without positioning slot
F	自动换刀加大法兰无定位键 Automatic change tool with larger flange without positioning slot

04. 刀柄类型 | CHUCK TYPE

HY	液压刀柄 Hydraulic Chuck
ST	热装刀柄 Shrink-fit Chuck

6	6mm	14	14mm	25	25mm
8	8mm	16	16mm	32	32mm
10	10mm	18	18mm		
12	12mm	20	20mm		

05. 夹持孔直径 | DIAMETER



M	公制 Metric
I	英制 Inch

07. 制式 | FORMAT



06. 有效长度 | LENGTH

50	50mm	70	70mm	85	85mm	110	110mm
55	55mm	72	72mm	87	87mm	115	115mm
58	58mm	75	75mm	90	90mm	120	120mm
60	60mm	76	76mm	92	92mm	125	125mm
65	65mm	80	80mm	97	97mm	140	140mm
66	66mm	81	81mm	100	100mm	150	150mm
67	67mm	82	82mm	102	102mm	200	200mm
69	69mm	83	83mm	105	105mm		

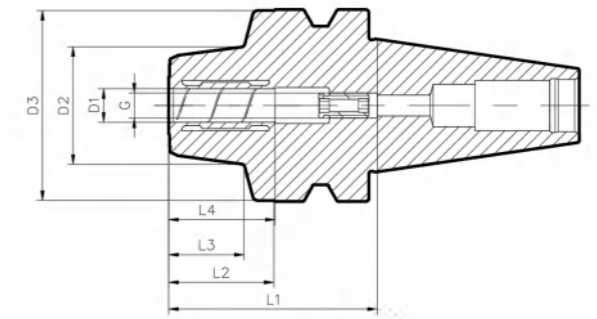
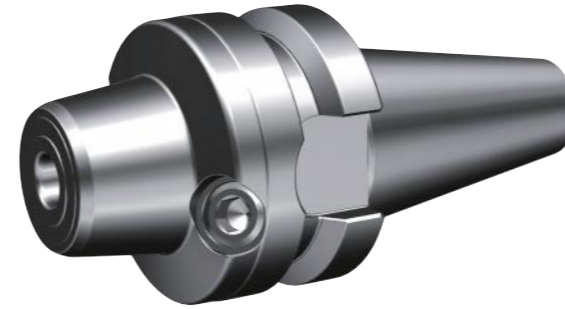
通用型液压刀柄 GENERAL PURPOSE

- 适用于钻削、铰削、镗削及铣削等切削加工；
- 接口涵盖BT、HSK、SK及PSC等类型；
- 在2.5xD处回转精度 $\leq 0.003\text{mm}$ ；
- 转速为25000rpm时，平衡质量等级达到G2.5或 $U_{\text{max}} < 1\text{g}\cdot\text{mm}$ 。
- For drilling, reaming, boring, milling, and other cutting machining;
- Coupling type: BT/ HSK/ SK/ PSC;
- Runout $\leq 0.003\text{mm}$ at 2.5D;
- Balancing Grade: G2.5 at 25,000 rpm or $U_{\text{max}} < 1\text{g}\cdot\text{mm}$.



通用型/GP BT30A

JIS B 6339



- 在2.5xD处回转精度 $\leq 0.003\text{mm}$
- 转速为25,000 rpm时，平衡质量等级达到G2.5或 $U_{\text{max}} < 1\text{g}\cdot\text{mm}$
- 轴向长度可调节
- Runout $\leq 0.003\text{mm}$ at 2.5D
- Balancing Grade: G2.5 at 25,000 rpm or $U_{\text{max}} < 1\text{g}\cdot\text{mm}$
- With adjustable axial length

技术参数 | Technical parameters

单位 | Unit: mm

接口 Coupling	订货号 Ordering code	D1	D2	D3	L1	L2	L3	L4	G	重量 m (kg)	扳手 Key	库存 Stock
BT30A	BGPBT30AHY06050M	6	26	45.5	50	25.2	17.4	26	M5	0.6	SW5	▲
BT30A	BGPBT30AHY06100M	6	26	45.5	100	75.2	58.8	26	M5	0.86	SW5	▲
BT30A	BGPBT30AHY08050M	8	28	45.5	50	25.2	19	26	M6	0.61	SW5	▲
BT30A	BGPBT30AHY08100M	8	28	45.5	100	75.2	59.1	26	M6	0.89	SW5	▲
BT30A	BGPBT30AHY10050M	10	30	45.5	50	25.2	17.4	30	M8×1	0.61	SW5	▲
BT30A	BGPBT30AHY10100M	10	30	45.5	100	75.2	59.3	30	M8×1	0.94	SW5	▲
BT30A	BGPBT30AHY12050M	12	32	45.5	50	25.2	17.4	36	M8×1	0.62	SW5	▲
BT30A	BGPBT30AHY12100M	12	32	45.5	100	75.2	59.6	36	M8×1	0.97	SW5	▲
BT30A	BGPBT30AHY16090M	16	38	45.5	90	65.2	50.4	40	M12×1	0.98	SW5	▲
BT30A	BGPBT30AHY20090M	20	42	45.5	90	65.2	50.9	41	M12×1	1.02	SW5	●
BT30A	BGPBT30AHY20100M	20	42	45.5	100	75.2	60.9	41	M12×1	1.14	SW5	▲

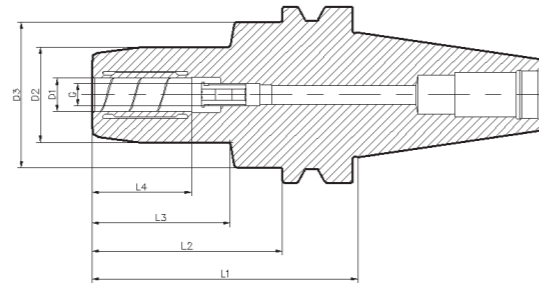
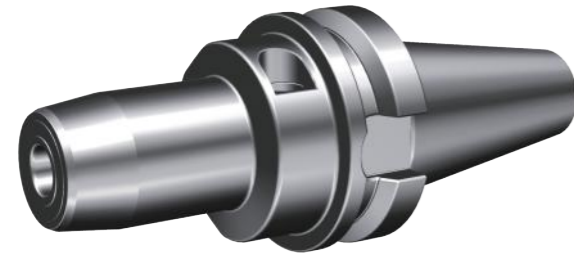
供货期: ● 可供现货 ▲ 交货时间短 ○ 按需求定制

Availability: ● available in stock ▲ short lead time ○ on request

- 刀具柄部公差等级: h6
- 配合减径套夹持，实现更灵活的夹持范围
- 标准发货范围不含驱动扳手
- 可按要求定制其他尺寸和特殊设计
- 拉钉选配详见通用刀柄样册P43-44
- Tolerance class of tool shank: h6
- Clamping with Reduction bushes, to achieve more flexible clamping range
- Drive key is not included in the standard order
- Additional sizes and special designs available on request
- Pull stud choose, see the sample book of General Tool Holder P43-44

通用型/GP BT40A

JIS B 6339



- 在2.5xD处回转精度≤0.003mm
- 转速为25,000 rpm时，平衡质量等级达到G2.5或Umax < 1 g·mm
- 轴向长度可调节

- Runout ≤ 0.003mm at 2.5D
- Balancing Grade: G2.5 at 25,000 rpm or Umax < 1 g·mm
- With adjustable axial length

技术参数 | Technical parameters

单位 | Unit: mm

接口 Coupling	订货号 Ordering code	D1	D2	D3	L1	L2	L3	L4	G	重量 m (kg)	扳手 Key	库存 Stock
BT40A	BGPBT40AHY06090M	6	26	52	90	63	43.6	26	M5	1.42	SW5	●
BT40A	BGPBT40AHY06140M	6	26	52	140	113	93.6	26	M5	1.63	SW5	▲
BT40A	BGPBT40AHY08090M	8	28	52	90	63	43.8	26	M6	1.42	SW5	●
BT40A	BGPBT40AHY08140M	8	28	52	140	113	93.8	26	M6	1.68	SW5	▲
BT40A	BGPBT40AHY10090M	10	30	52	90	63	44	30	M8×1	1.43	SW5	●
BT40A	BGPBT40AHY10140M	10	30	52	140	113	94	30	M8×1	1.76	SW5	▲
BT40A	BGPBT40AHY12090M	12	32	52	90	63	44.1	36	M8×1	1.5	SW5	●
BT40A	BGPBT40AHY12140M	12	32	52	140	113	94.1	36	M8×1	1.84	SW5	▲
BT40A	BGPBT40AHY16090M	16	38	52	90	63	44.7	40	M12×1	1.57	SW5	●
BT40A	BGPBT40AHY16140M	16	38	52	140	113	94.7	40	M12×1	2.05	SW5	▲
BT40A	BGPBT40AHY20090M	20	42	52	90	63	45	41	M12×1	1.69	SW5	●
BT40A	BGPBT40AHY20140M	20	42	52	140	113	95	41	M12×1	2.19	SW5	▲
BT40A	BGPBT40AHY32083M	32	63	75	83	56	29.9	51	M16×1	1.94	SW6	●

供货期: ● 可供现货 ▲ 交货时间短 ○ 按需求定制

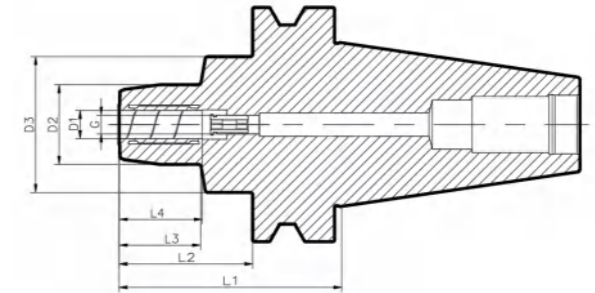
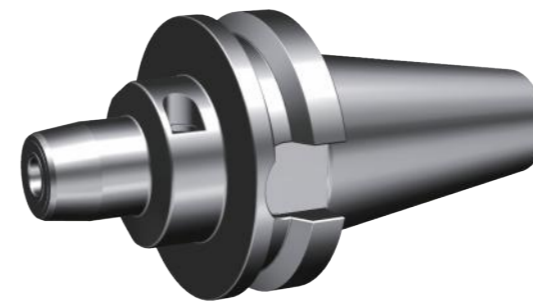
Availability: ● available in stock ▲ short lead time ○ on request

- 刀具柄部公差等级: h6
- 配合减径套夹持，实现更灵活的夹持范围
- 标准发货范围不含驱动扳手
- 可按要求定制其他尺寸和特殊设计
- 拉钉选配详见通用刀柄样册P43-44

- Tolerance class of tool shank: h6
- Clamping with Reduction bushes, to achieve more flexible clamping range
- Drive key is not included in the standard order
- Additional sizes and special designs available on request
- Pull stud choose, see the sample book of General Tool Holder P43-44

通用型/GP BT50A

JIS B 6339



- 在2.5xD处回转精度≤0.003mm
- 转速为25,000 rpm时，平衡质量等级达到G2.5或Umax < 1 g·mm
- 轴向长度可调节

- Runout ≤ 0.003mm at 2.5D
- Balancing Grade: G2.5 at 25,000 rpm or Umax < 1 g·mm
- With adjustable axial length

技术参数 | Technical parameters

单位 | Unit: mm

接口 Coupling	订货号 Ordering code	D1	D2	D3	L1	L2	L3	L4	G	重量 m (kg)	扳手 Key	库存 Stock
BT50A	BGPBT50AHY06090M	6	26	58	90	52	29.1	26	M5	4.14	SW5	▲
BT50A	BGPBT50AHY06140M	6	26	58	140	102	79.1	26	M5	4.33	SW5	▲
BT50A	BGPBT50AHY08090M	8	28	58	90	52	29.3	26	M6	4.14	SW5	▲
BT50A	BGPBT50AHY08140M	8	28	58	140	102	79.3	26	M6	4.36	SW5	▲
BT50A	BGPBT50AHY10090M	10	30	58	90	52	29.4	30	M8×1	4.13	SW5	▲
BT50A	BGPBT50AHY10140M	10	30	58	140	102	79.4	30	M8×1	4.38	SW5	▲
BT50A	BGPBT50AHY12090M	12	32	58	90	52	31	36	M8×1	4.16	SW5	▲
BT50A	BGPBT50AHY12140M	12	32	58	140	102	79.6	36	M8×1	4.48	SW5	▲
BT50A	BGPBT50AHY16090M	16	38	58	90	52	30.1	40	M12×1	4.17	SW5	▲
BT50A	BGPBT50AHY16140M	16	38	58	140	102	80.1	40	M12×1	4.58	SW5	▲
BT50A	BGPBT50AHY20090M	20	42	58	90	52	31	41	M12×1	4.21	SW5	●
BT50A	BGPBT50AHY20140M	20	42	58	140	102	80.5	41	M12×1	4.77	SW5	▲
BT50A	BGPBT50AHY32120M	32	63	75	120	82	60.8	51	M16×1	5.29	SW6	●

供货期: ● 可供现货 ▲ 交货时间短 ○ 按需求定制

Availability: ● available in stock ▲ short lead time ○ on request

- 刀具柄部公差等级: h6
- 配合减径套夹持，实现更灵活的夹持范围
- 标准发货范围不含驱动扳手
- 可按要求定制其他尺寸和特殊设计
- 拉钉选配详见通用刀柄样册P43-44

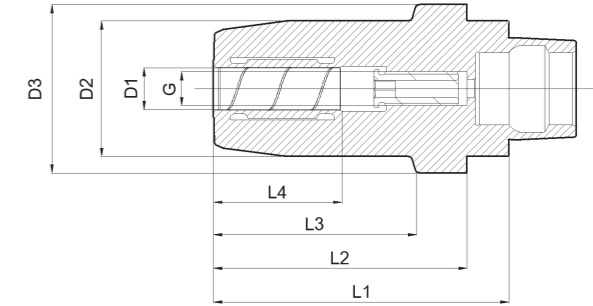
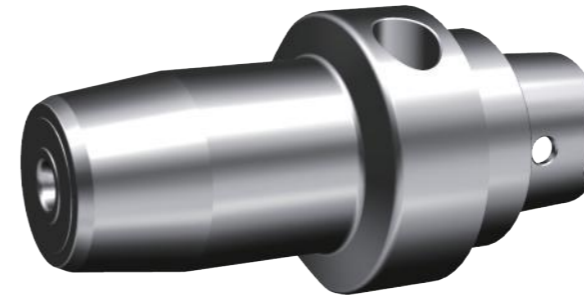
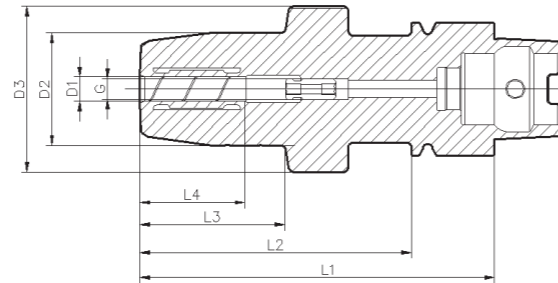
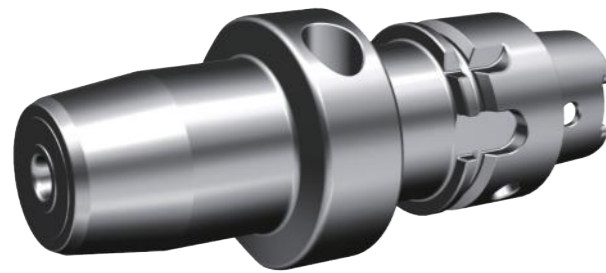
- Tolerance class of tool shank: h6
- Clamping with Reduction bushes, to achieve more flexible clamping range
- Drive key is not included in the standard order
- Additional sizes and special designs available on request
- Pull stud choose, see the sample book of General Tool Holder P43-44

通用型/GP HSK32A

DIN 69893

通用型/GP HSK32C

DIN 69893



- 在2.5xD处回转精度≤0.003mm
- 转速为25,000 rpm时，平衡质量等级达到G2.5或Umax < 1 g·mm
- 轴向长度可调节

- Runout ≤ 0.003mm at 2.5D
- Balancing Grade: G2.5 at 25,000 rpm or Umax < 1 g·mm
- With adjustable axial length

技术参数 | Technical parameters

单位 | Unit: mm

接口 Coupling	订货号 Ordering code	D1	D2	D3	L1	L2	L3	L4	G	重量 m (kg)	扳手 Key	水嘴 Nozzle	库存 Stock
HSK32A	BGPHSK32AHY06080M	6	26	39.8	80	60	29.7	26	M5	0.41	SW4	M10*1	▲
HSK32A	BGPHSK32AHY08080M	8	28	39.8	80	60	29.8	26	M6	0.42	SW4	M10*1	▲
HSK32A	BGPHSK32AHY10085M	10	30	39.8	85	65	35	30	M8×1	0.47	SW4	M10*1	▲
HSK32A	BGPHSK32AHY12090M	12	32	39.8	90	70	40.2	36	M8×1	0.52	SW4	M10*1	▲

供货期: ● 可供现货 ▲ 交货时间短 ○ 按需求定制

Availability: ● available in stock ▲ short lead time ○ on request

- 刀具柄部公差等级: h6
- 配合减径套夹持，实现更灵活的夹持范围
- 标准发货范围不含驱动扳手
- 可按要求定制其他尺寸和特殊设计
- 如需单独订购水嘴，请参照60页

- Tolerance class of tool shank: h6
- Clamping with Reduction bushes, to achieve more flexible clamping range
- Drive key is not included in the standard order
- Additional sizes and special designs available on request
- Nozzle need to be ordered separately. Please refer to P60

技术参数 | Technical parameters

单位 | Unit: mm

接口 Coupling	订货号 Ordering code	D1	D2	D3	L1	L2	L3	L4	G	重量 m (kg)	扳手 Key	库存 Stock
HSK32C	BGPHSK32CHY06065M	6	26	32	65	33.1	33.1	26	M5	0.35	SW4	○
HSK32C	BGPHSK32CHY08067M	8	28	32	67	33.4	33.4	26	M6	0.38	SW4	○
HSK32C	BGPHSK32CHY10070M	10	30	32	70	36.7	36.7	30	-	0.43	SW4	○
HSK32C	BGPHSK32CHY12076M	12	32	32	76	76	76	36	-	0.49	SW4	▲

供货期: ● 可供现货 ▲ 交货时间短 ○ 按需求定制

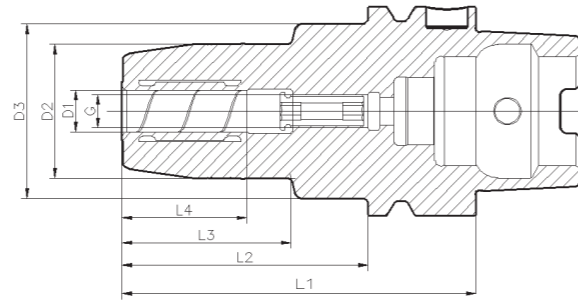
Availability: ● available in stock ▲ short lead time ○ on request

- 刀具柄部公差等级: h6
- 配合减径套夹持，实现更灵活的夹持范围
- 标准发货范围不含驱动扳手
- 可按要求定制其他尺寸和特殊设计

- Tolerance class of tool shank: h6
- Clamping with Reduction bushes, to achieve more flexible clamping range
- Drive key is not included in the standard order
- Additional sizes and special designs available on request

通用型/GP HSK40A

DIN 69893



- 在2.5xD处回转精度≤0.003mm
- 转速为25,000 rpm时，平衡质量等级达到G2.5或U_{max} < 1 g·mm
- 轴向长度可调节

- Runout ≤ 0.003mm at 2.5D
- Balancing Grade: G2.5 at 25,000 rpm or U_{max} < 1 g·mm
- With adjustable axial length

技术参数 | Technical parameters

单位 | Unit: mm

接口 Coupling	订货号 Ordering code	D1	D2	D3	L1	L2	L3	L4	G	重量 m (kg)	扳手 Key	水嘴 Nozzle	库存 Stock
HSK40A	BGPHSK40AHY06070M	6	26	33.5	70	50	31.9	26	M5	0.41	SW4	M12*1	▲
HSK40A	BGPHSK40AHY08070M	8	28	33.5	70	50	32.2	26	M6	0.42	SW4	M12*1	▲
HSK40A	BGPHSK40AHY10075M	10	30	33.5	75	55	37.5	30	M8×1	0.48	SW4	M12*1	▲
HSK40A	BGPHSK40AHY12080M	12	32	33.5	80	60	42.5	36	M8×1	0.52	SW4	M12*1	●
HSK40A	BGPHSK40AHY14085M	14	34	52.5	85	65	31.3	39	M10×1	0.78	SW5	M12*1	○
HSK40A	BGPHSK40AHY16090M	16	38	52.5	90	70	36.6	40	M12×1	0.83	SW5	M12*1	▲
HSK40A	BGPHSK40AHY20100M	20	42	52.5	100	80	47	41	M12×1	0.97	SW5	M12*1	●

供货期: ● 可供现货 ▲ 交货时间短 ○ 按需求定制

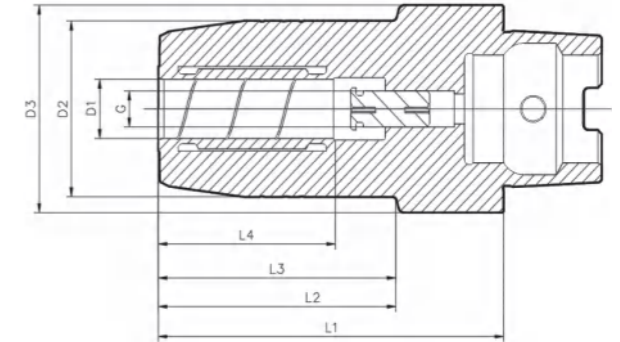
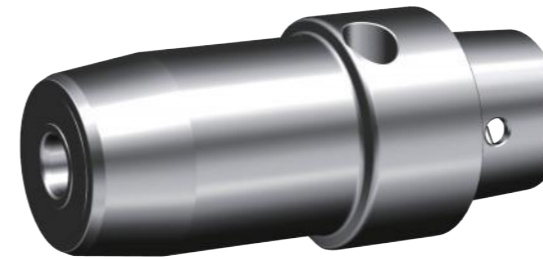
Availability: ● available in stock ▲ short lead time ○ on request

- 刀具柄部公差等级: h6
- 配合减径套夹持, 实现更灵活的夹持范围
- 标准发货范围不含驱动扳手
- 可按要求定制其他尺寸和特殊设计
- 如需单独订购水嘴, 请参照60页

- Tolerance class of tool shank: h6
- Clamping with Reduction bushes, to achieve more flexible clamping range
- Drive key is not included in the standard order
- Additional sizes and special designs available on request
- Nozzle need to be ordered seperately. Please refer to P60

通用型/GP HSK40C

DIN 69893



- 在2.5xD处回转精度≤0.003mm
- 转速为25,000 rpm时，平衡质量等级达到G2.5或U_{max} < 1 g·mm
- 轴向长度可调节

- Runout ≤ 0.003mm at 2.5D
- Balancing Grade: G2.5 at 25,000 rpm or U_{max} < 1 g·mm
- With adjustable axial length

技术参数 | Technical parameters

单位 | Unit: mm

接口 Coupling	订货号 Ordering code	D1	D2	D3	L1	L2	L3	L4	G	重量 m (kg)	扳手 Key	库存 Stock
HSK40C	BGPHSK40CHY06060M	6	26	40	60	36.1	36.1	26	M5	0.36	SW4	●
HSK40C	BGPHSK40CHY08060M	8	28	40	60	36.3	36.3	26	M6	0.37	SW4	▲
HSK40C	BGPHSK40CHY10065M	10	30	40	65	41.6	41.6	30	M8×1	0.44	SW4	●
HSK40C	BGPHSK40CHY12070M	12	32	40	70	47	47	36	M8×1	0.49	SW4	●

供货期: ● 可供现货 ▲ 交货时间短 ○ 按需求定制

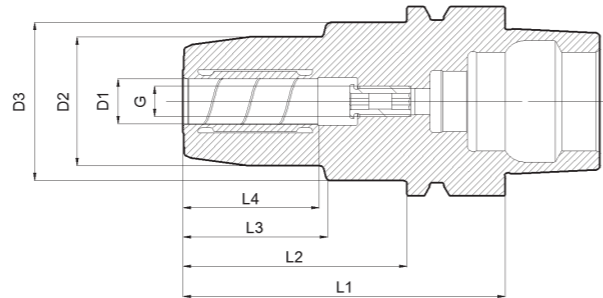
Availability: ● available in stock ▲ short lead time ○ on request

- 刀具柄部公差等级: h6
- 配合减径套夹持, 实现更灵活的夹持范围
- 标准发货范围不含驱动扳手
- 可按要求定制其他尺寸和特殊设计

- Tolerance class of tool shank: h6
- Clamping with Reduction bushes, to achieve more flexible clamping range
- Drive key is not included in the standard order
- Additional sizes and special designs available on request

通用型/GP HSK40E

DIN 69893



- 在2.5xD处回转精度≤0.003mm
- 转速为25,000 rpm时，平衡质量等级达到G2.5或Umax < 1 g·mm
- 轴向长度可调节

- Runout ≤ 0.003mm at 2.5D
- Balancing Grade: G2.5 at 25,000 rpm or Umax < 1 g·mm
- With adjustable axial length

技术参数 | Technical parameters

单位 | Unit: mm

接口 Coupling	订货号 Ordering code	D1	D2	D3	L1	L2	L3	L4	G	重量 m (kg)	扳手 Key	水嘴 Nozzle	库存 Stock
HSK40E	BGPHSK40EHY06070M	6	26	33.5	70	50	31.9	26	M5	0.42	SW4	M12*1	○
HSK40E	BGPHSK40EHY08070M	8	28	33.5	70	50	32.2	26	M6	0.44	SW4	M12*1	○
HSK40E	BGPHSK40EHY10075M	10	30	33.5	75	55	37.5	30	M8×1	0.49	SW4	M12*1	○
HSK40E	BGPHSK40EHY12080M	12	32	33.5	80	60	42.7	36	M8×1	0.54	SW4	M12*1	▲

供货期: ● 可供现货 ▲ 交货时间短 ○ 按需求定制

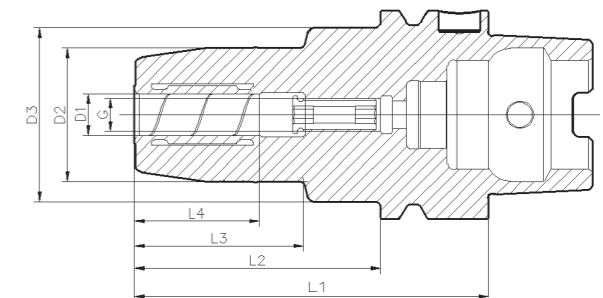
Availability: ● available in stock ▲ short lead time ○ on request

- 刀具柄部公差等级: h6
- 配合减径套夹持，实现更灵活的夹持范围
- 标准发货范围不含驱动扳手
- 可按要求定制其他尺寸和特殊设计
- 如需单独订购水嘴，请参照60页

- Tolerance class of tool shank: h6
- Clamping with Reduction bushes, to achieve more flexible clamping range
- Drive key is not included in the standard order
- Additional sizes and special designs available on request
- Nozzle need to be ordered seperately. Please refer to P60

通用型/GP HSK50A

DIN 69893



- 在2.5xD处回转精度≤0.003mm
- 转速为25,000 rpm时，平衡质量等级达到G2.5或Umax < 1 g·mm
- 轴向长度可调节

- Runout ≤ 0.003mm at 2.5D
- Balancing Grade: G2.5 at 25,000 rpm or Umax < 1 g·mm
- With adjustable axial length

技术参数 | Technical parameters

单位 | Unit: mm

接口 Coupling	订货号 Ordering code	D1	D2	D3	L1	L2	L3	L4	G	重量 m (kg)	扳手 Key	水嘴 Nozzle	库存 Stock
HSK50A	BGPHSK50AHY06070M	6	26	41.8	70	44	20.8	26	M5	0.62	SW5	M16*1	▲
HSK50A	BGPHSK50AHY08070M	8	28	41.8	70	44	21.1	26	M6	0.63	SW5	M16*1	▲
HSK50A	BGPHSK50AHY10075M	10	30	41.8	75	49	31	30	M8×1	0.71	SW5	M16*1	▲
HSK50A	BGPHSK50AHY12085M	12	32	41.8	85	59	36.6	36	M8×1	0.78	SW5	M16*1	●
HSK50A	BGPHSK50AHY14085M	14	34	41.8	85	59	36.9	39	M10×1	0.83	SW5	M16*1	○
HSK50A	BGPHSK50AHY16090M	16	38	52.8	90	64	31	40	M12×1	1.02	SW5	M16*1	▲
HSK50A	BGPHSK50AHY18090M	18	40	52.8	90	64	31	41	M12×1	1.03	SW5	M16*1	○
HSK50A	BGPHSK50AHY20090M	20	42	56.8	90	64	31	41	M12×1	1.08	SW5	M16*1	●

供货期: ● 可供现货 ▲ 交货时间短 ○ 按需求定制

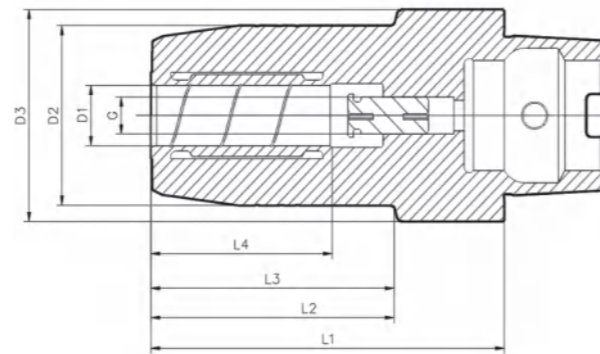
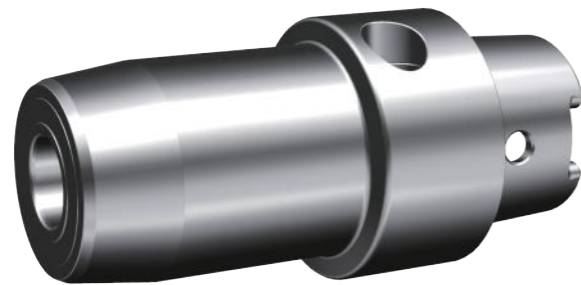
Availability: ● available in stock ▲ short lead time ○ on request

- 刀具柄部公差等级: h6
- 配合减径套夹持，实现更灵活的夹持范围
- 标准发货范围不含驱动扳手
- 可按要求定制其他尺寸和特殊设计
- 如需单独订购水嘴，请参照60页

- Tolerance class of tool shank: h6
- Clamping with Reduction bushes, to achieve more flexible clamping range
- Drive key is not included in the standard order
- Additional sizes and special designs available on request
- Nozzle need to be ordered seperately. Please refer to P60

通用型/GP HSK50C

DIN 69893



- 在2.5xD处回转精度≤0.003mm
- 转速为25,000 rpm时, 平衡质量等级达到G2.5或Umax < 1 g·mm
- 轴向长度可调节

- Runout ≤ 0.003mm at 2.5D
- Balancing Grade: G2.5 at 25,000 rpm or Umax < 1 g·mm
- With adjustable axial length

技术参数 | Technical parameters

单位 | Unit: mm

接口 Coupling	订货号 Ordering code	D1	D2	D3	L1	L2	L3	L4	G	重量 m (kg)	扳手 Key	库存 Stock
HSK50C	BGPHSK50CHY06060M	6	26	50	60	28.3	28.3	26	M5	0.55	SW5	▲
HSK50C	BGPHSK50CHY08060M	8	28	50	60	28.5	28.5	26	M6	0.56	SW5	▲
HSK50C	BGPHSK50CHY10065M	10	30	50	65	33.7	33.7	30	M8×1	0.62	SW5	▲
HSK50C	BGPHSK50CHY12075M	12	32	50	75	43.9	43.9	36	M8×1	0.7	SW5	●
HSK50C	BGPHSK50CHY14075M	14	34	50	75	44	44	36	M10×1	0.76	SW5	○
HSK50C	BGPHSK50CHY16080M	16	38	50	80	49.4	49.4	40	M12×1	0.83	SW5	▲
HSK50C	BGPHSK50CHY18080M	18	40	50	80	49.6	49.6	41	M12×1	0.86	SW5	○
HSK50C	BGPHSK50CHY20080M	20	42	50	80	49.7	49.7	41	M12×1	0.89	SW5	●

供货期: ● 可供现货 ▲ 交货时间短 ○ 按需求定制

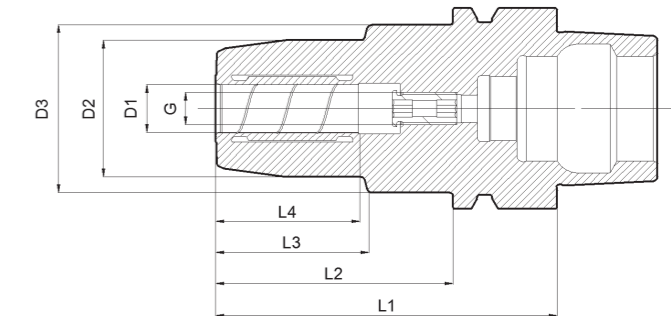
Availability: ● available in stock ▲ short lead time ○ on request

- 刀具柄部公差等级: h6
- 配合减径套夹持, 实现更灵活的夹持范围
- 标准发货范围不含驱动扳手
- 可按要求定制其他尺寸和特殊设计

- Tolerance class of tool shank: h6
- Clamping with Reduction bushes, to achieve more flexible clamping range
- Drive key is not included in the standard order
- Additional sizes and special designs available on request

通用型/GP HSK50E

DIN 69893



- 在2.5xD处回转精度≤0.003mm
- 转速为25,000 rpm时, 平衡质量等级达到G2.5或Umax < 1 g·mm
- 轴向长度可调节

- Runout ≤ 0.003mm at 2.5D
- Balancing Grade: G2.5 at 25,000 rpm or Umax < 1 g·mm
- With adjustable axial length

技术参数 | Technical parameters

单位 | Unit: mm

接口 Coupling	订货号 Ordering code	D1	D2	D3	L1	L2	L3	L4	G	重量 m (kg)	扳手 Key	水嘴 Nozzle	库存 Stock
HSK50E	BGPHSK50EHY06070M	6	26	41.8	70	44	20.8	26	M5	0.69	SW5	M16*1	▲
HSK50E	BGPHSK50EHY08070M	8	28	41.8	70	44	21.1	26	M6	0.697	SW5	M16*1	▲
HSK50E	BGPHSK50EHY10075M	10	30	41.8	75	49	31	30	M8×1	0.731	SW5	M16*1	▲
HSK50E	BGPHSK50EHY12085M	12	32	41.8	85	59	36.6	36	M8×1	0.812	SW5	M16*1	▲
HSK50E	BGPHSK50EHY16090M	16	38	41.8	90	64	31	40	M12×1	1.044	SW5	M16*1	▲
HSK50E	BGPHSK50EHY20090M	20	42	41.8	90	64	31	41	M12×1	1.103	SW5	M16*1	▲

供货期: ● 可供现货 ▲ 交货时间短 ○ 按需求定制

Availability: ● available in stock ▲ short lead time ○ on request

- 刀具柄部公差等级: h6
- 配合减径套夹持, 实现更灵活的夹持范围
- 标准发货范围不含驱动扳手
- 可按要求定制其他尺寸和特殊设计
- 如需单独订购水嘴, 请参照P60

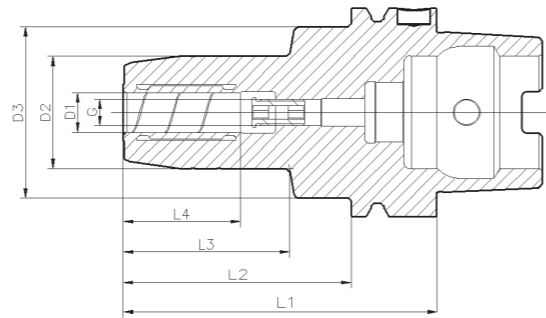
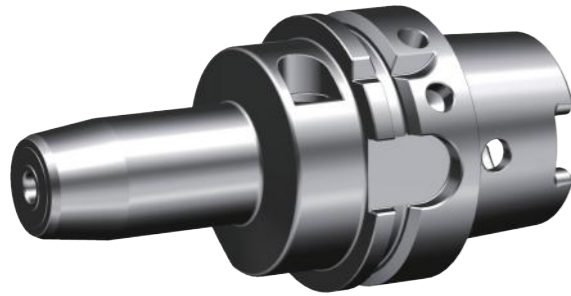
- Tolerance class of tool shank: h6
- Clamping with Reduction bushes, to achieve more flexible clamping range
- Drive key is not included in the standard order
- Additional sizes and special designs available on request
- Nozzle need to be ordered separately. Please refer to P60

通用型/GP HSK63A

DIN 69893

通用型/GP HSK63A

DIN 69893



- 在2.5xD处回转精度≤0.003mm
- 转速为25,000 rpm时, 平衡质量等级达到G2.5或Umax < 1 g·mm
- 轴向长度可调节

- Runout ≤ 0.003mm at 2.5D
- Balancing Grade: G2.5 at 25,000 rpm or Umax < 1 g·mm
- With adjustable axial length

技术参数 | Technical parameters

单位 | Unit: mm

接口 Coupling	订货号 Ordering code	D1	D2	D3	L1	L2	L3	L4	G	重量 m (kg)	扳手 Key	水嘴 Nozzle	库存 Stock
HSK63A	BGPHSK63AHY06070M	6	26	51.8	70	44	24.7	26	-	1	SW5	M18*1	●
HSK63A	BGPHSK63AHY06080M	6	26	51.8	80	54	34.7	26	M5	1.04	SW5	M18*1	▲
HSK63A	BGPHSK63AHY06120M	6	26	51.8	120	94	74.7	26	M5	1.2	SW5	M18*1	▲
HSK63A	BGPHSK63AHY06125M	6	26	51.8	125	99	79.7	26	M5	1.22	SW5	M18*1	▲
HSK63A	BGPHSK63AHY06200M	6	26	51.8	200	174	154.7	26	M5	1.53	SW5	M18*1	○
HSK63A	BGPHSK63AHY08070M	8	28	51.8	70	44	24.9	26	-	1.02	SW5	M18*1	●
HSK63A	BGPHSK63AHY08080M	8	28	51.8	80	54	34.9	26	M6	1.05	SW5	M18*1	▲
HSK63A	BGPHSK63AHY08120M	8	28	51.8	120	94	74.9	26	M6	1.22	SW5	M18*1	▲
HSK63A	BGPHSK63AHY08125M	8	28	51.8	125	99	79.9	26	M6	1.27	SW5	M18*1	▲
HSK63A	BGPHSK63AHY08200M	8	28	51.8	200	174	154.9	26	M6	1.62	SW5	M18*1	○
HSK63A	BGPHSK63AHY10080M	10	30	51.8	80	54	35	30	M8×1	1.08	SW5	M18*1	●
HSK63A	BGPHSK63AHY10085M	10	30	51.8	85	59	40	30	M8×1	1.11	SW5	M18*1	▲
HSK63A	BGPHSK63AHY10120M	10	30	51.8	120	94	75	30	M8×1	1.31	SW5	M18*1	▲
HSK63A	BGPHSK63AHY10125M	10	30	51.8	125	99	80	30	M8×1	1.34	SW5	M18*1	▲

转下页 see next page →

技术参数 | Technical parameters

单位 | Unit: mm

接口 Coupling	订货号 Ordering code	D1	D2	D3	L1	L2	L3	L4	G	重量 m (kg)	扳手 Key	水嘴 Nozzle	库存 Stock
HSK63A	BGPHSK63AHY10200M	10	30	51.8	200	174	155	30	M8×1	1.77	SW5	M18*1	○
HSK63A	BGPHSK63AHY12085M	12	32	51.8	85	59	40.2	36	M8×1	1.13	SW5	M18*1	●
HSK63A	BGPHSK63AHY12090M	12	32	51.8	90	64	45.2	36	M8×1	1.16	SW5	M18*1	●
HSK63A	BGPHSK63AHY12120M	12	32	51.8	120	94	75.2	36	M8×1	1.36	SW5	M18*1	●
HSK63A	BGPHSK63AHY12200M	12	32	51.8	200	174	155.2	36	M8×1	1.89	SW5	M18*1	○
HSK63A	BGPHSK63AHY14085M	14	34	51.8	85	59	40.4	36	M10×1	1.18	SW5	M18*1	●
HSK63A	BGPHSK63AHY14090M	14	34	51.8	90	64	45.4	36	M10×1	1.22	SW5	M18*1	○
HSK63A	BGPHSK63AHY14120M	14	34	51.8	120	94	75.4	36	M10×1	1.47	SW5	M18*1	○
HSK63A	BGPHSK63AHY14200M	14	34	51.8	200	174	155.4	36	M10×1	2.14	SW5	M18*1	○
HSK63A	BGPHSK63AHY16090M	16	38	51.8	90	64	45.7	40	M12×1	1.24	SW5	M18*1	●
HSK63A	BGPHSK63AHY16120M	16	38	51.8	120	94	75.7	40	M12×1	1.52	SW5	M18*1	●
HSK63A	BGPHSK63AHY16200M	16	38	51.8	200	174	155.7	40	M12×1	2.27	SW5	M18*1	○
HSK63A	BGPHSK63AHY18090M	18	40	51.8	90	64	45.9	41	M12×1	1.27	SW5	M18*1	●
HSK63A	BGPHSK63AHY18120M	18	40	51.8	120	94	75.9	41	M12×1	1.58	SW5	M18*1	○
HSK63A	BGPHSK63AHY18200M	18	40	51.8	200	174	155.9	41	M12×1	2.41	SW5	M18*1	○
HSK63A	BGPHSK63AHY20090M	20	42	51.8	90	64	46.1	41	M12×1	1.29	SW5	M18*1	●
HSK63A	BGPHSK63AHY20100M	20	42	51.8	100	74	56.1	41	M12×1	1.4	SW5	M18*1	●
HSK63A	BGPHSK63AHY20120M	20	42	51.8	120	94	76.1	41	M12×1	1.61	SW5	M18*1	●
HSK63A	BGPHSK63AHY20125M	20	42	51.8	125	99	81.1	41	M12×1	1.67	SW5	M18*1	▲
HSK63A	BGPHSK63AHY20200M	20	42	51.8	200	174	156.1	41	M12×1	2.54	SW5	M18*1	○
HSK63A	BGPHSK63AHY25115M	25	57	64.8	115	89	55.9	47	M16×1	2.18	SW5	M18*1	○
HSK63A	BGPHSK63AHY25120M	25	57	64.8	120	94	60.9	47	M16×1	2.28	SW5	M18*1	●
HSK63A	BGPHSK63AHY32120M	32	63	74.8	120	94	59.8	51	M16×1	2.47	SW6	M18*1	○
HSK63A	BGPHSK63AHY32125M	32	63	74.8	125	99	64.8	51	M16×1	2.59	SW6	M18*1	●

供货期: ● 可供现货 ▲ 交货时间短 ○ 按需求定制

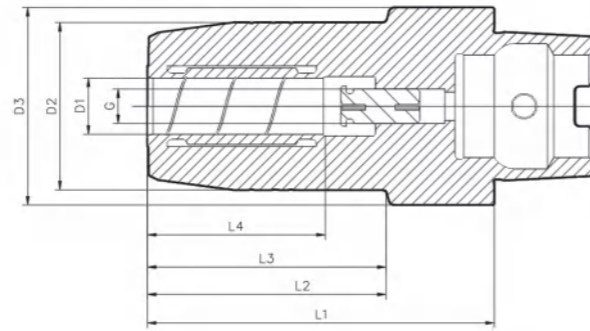
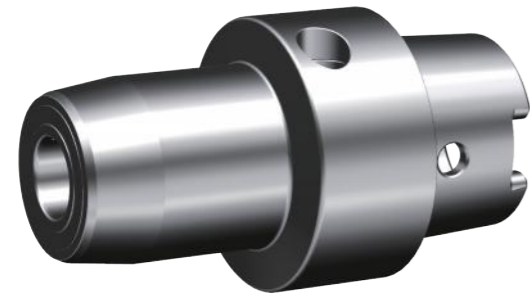
Availability: ● available in stock ▲ short lead time ○ on request

- 刀具柄部公差等级: h6
- 配合减径套夹持, 实现更灵活的夹持范围
- 标准发货范围不含驱动扳手
- 可按要求定制其他尺寸和特殊设计
- 如需单独订购水嘴, 请参照60页

- Tolerance class of tool shank: h6
- Clamping with Reduction bushes, to achieve more flexible clamping range
- Drive key is not included in the standard order
- Additional sizes and special designs available on request
- Nozzle need to be ordered separately. Please refer to P60

通用型/GP HSK63C

DIN 69893



- 在2.5xD处回转精度≤0.003mm
- 转速为25,000 rpm时，平衡质量等级达到G2.5或Umax < 1 g·mm
- 轴向长度可调节

- Runout ≤ 0.003mm at 2.5D
- Balancing Grade: G2.5 at 25,000 rpm or Umax < 1 g·mm
- With adjustable axial length

技术参数 | Technical parameters

单位 | Unit: mm

接口 Coupling	订货号 Ordering code	D1	D2	D3	L1	L2	L3	L4	G	重量 m (kg)	扳手 Key	库存 Stock
HSK63C	BGPHSK63CHY06060M	6	26	63	60	27.2	27.2	26	M5	0.93	SW5	▲
HSK63C	BGPHSK63CHY08060M	8	28	63	60	27.4	27.4	26	M6	0.94	SW5	▲
HSK63C	BGPHSK63CHY10065M	10	30	63	65	32.5	32.5	30	M8×1	0.99	SW5	▲
HSK63C	BGPHSK63CHY12075M	12	32	63	75	42.7	42.7	36	M8×1	1.06	SW5	▲
HSK63C	BGPHSK63CHY14075M	14	34	63	75	42.9	42.9	36	M10×1	1.11	SW5	○
HSK63C	BGPHSK63CHY16080M	16	38	63	80	48.2	48.2	40	M12×1	1.18	SW5	▲
HSK63C	BGPHSK63CHY18080M	18	40	63	80	48.4	48.4	41	M12×1	1.2	SW5	○
HSK63C	BGPHSK63CHY20080M	20	42	63	80	48.6	48.6	41	M12×1	1.23	SW5	●
HSK63C	BGPHSK63CHY32100M	32	63	63	100	59.4	59.4	51	M16×1	2.1	SW6	▲

供货期: ● 可供现货 ▲ 交货时间短 ○ 按需求定制

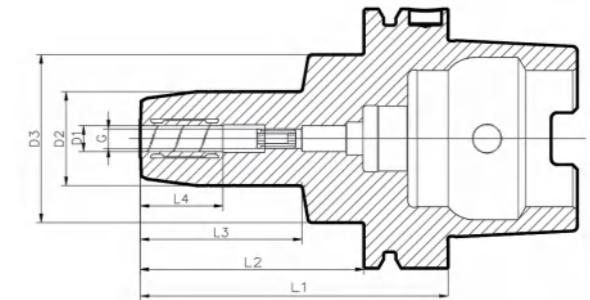
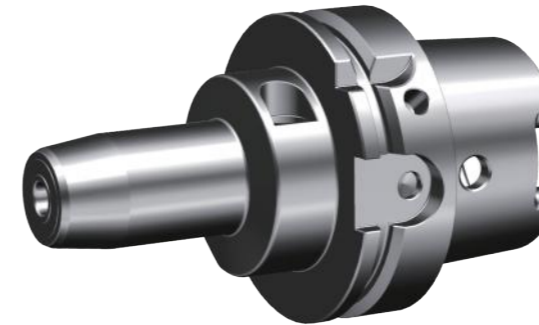
Availability: ● available in stock ▲ short lead time ○ on request

- 刀具柄部公差等级: h6
- 配合减径套夹持，实现更灵活的夹持范围
- 标准发货范围不含驱动扳手
- 可按要求定制其他尺寸和特殊设计

- Tolerance class of tool shank: h6
- Clamping with Reduction bushes, to achieve more flexible clamping range
- Drive key is not included in the standard order
- Additional sizes and special designs available on request

通用型/GP HSK80A

DIN 69893



- 在2.5xD处回转精度≤0.003mm
- 转速为25,000 rpm时，平衡质量等级达到G2.5或Umax < 1 g·mm
- 轴向长度可调节

- Runout ≤ 0.003mm at 2.5D
- Balancing Grade: G2.5 at 25,000 rpm or Umax < 1 g·mm
- With adjustable axial length

技术参数 | Technical parameters

单位 | Unit: mm

接口 Coupling	订货号 Ordering code	D1	D2	D3	L1	L2	L3	L4	G	重量 m (kg)	扳手 Key	水嘴 Nozzle	库存 Stock
HSK80A	BGPHSK80AHY06070M	6	26	51.8	70	44	24.7	26	-	1.45	SW5	M20*1.5	▲
HSK80A	BGPHSK80AHY08070M	8	28	51.8	70	44	24.9	26	-	1.46	SW5	M20*1.5	▲
HSK80A	BGPHSK80AHY10080M	10	30	51.8	80	54	35	30	M8×1	1.52	SW5	M20*1.5	▲
HSK80A	BGPHSK80AHY12085M	12	32	51.8	85	59	40.2	36	M8×1	1.57	SW5	M20*1.5	▲
HSK80A	BGPHSK80AHY14085M	14	34	51.8	85	59	40.4	36	-	1.62	SW5	M20*1.5	○
HSK80A	BGPHSK80AHY25110M	25	57	64.8	110	84	66.3	47	M16×1	2.58	SW5	M20*1.5	○
HSK80A	BGPHSK80AHY32125M	32	63	74.8	125	99	61.8	51	M16×1	3.21	SW6	M20*1.5	▲

供货期: ● 可供现货 ▲ 交货时间短 ○ 按需求定制

Availability: ● available in stock ▲ short lead time ○ on request

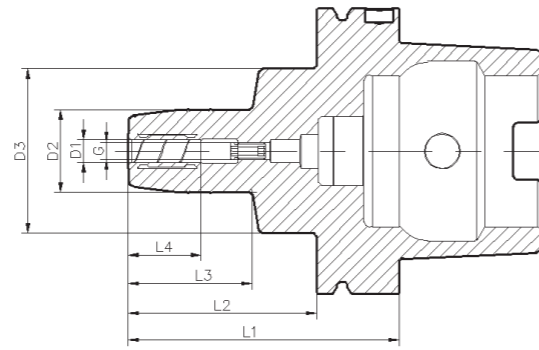
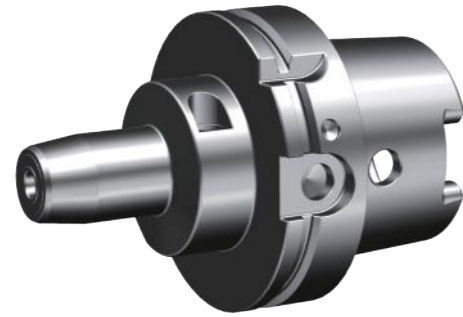
- 刀具柄部公差等级: h6
- 配合减径套夹持，实现更灵活的夹持范围
- 标准发货范围不含驱动扳手
- 可按要求定制其他尺寸和特殊设计
- 如需单独订购水嘴，请参照60页

- Tolerance class of tool shank: h6
- Clamping with Reduction bushes, to achieve more flexible clamping range
- Drive key is not included in the standard order
- Additional sizes and special designs available on request
- Nozzle need to be ordered separately. Please refer to P60

通用型/GP HSK100A

DIN 69893

通用型/GP HSK100A



- 在2.5xD处回转精度≤0.003mm
- 转速为25,000 rpm时, 平衡质量等级达到G2.5或Umax < 1 g·mm
- 轴向长度可调节

- Runout ≤ 0.003mm at 2.5D
- Balancing Grade: G2.5 at 25,000 rpm or Umax < 1 g·mm
- With adjustable axial length

技术参数 | Technical parameters

单位 | Unit: mm

接口 Coupling	订货号 Ordering code	D1	D2	D3	L1	L2	L3	L4	G	重量 m (kg)	扳手 Key	水嘴 Nozzle	库存 Stock
HSK100A	BGPHSK100AHY06075M	6	26	57.8	75	46	23.1	26	-	2.49	SW5	M24*1.5	▲
HSK100A	BGPHSK100AHY06110M	6	26	57.8	110	81	58.1	26	M5	2.6	SW5	M24*1.5	▲
HSK100A	BGPHSK100AHY06150M	6	26	57.8	150	121	98.1	26	M5	2.76	SW5	M24*1.5	▲
HSK100A	BGPHSK100AHY08075M	8	28	57.8	75	46	23.3	26	-	2.5	SW5	M24*1.5	▲
HSK100A	BGPHSK100AHY08110M	8	28	57.8	110	81	58.3	26	M6	2.63	SW5	M24*1.5	▲
HSK100A	BGPHSK100AHY08150M	8	28	57.8	150	121	98.3	26	M6	2.81	SW5	M24*1.5	▲
HSK100A	BGPHSK100AHY10090M	10	30	57.8	90	61	38.5	30	M8×1	2.59	SW5	M24*1.5	▲
HSK100A	BGPHSK100AHY10110M	10	30	57.8	110	81	58.5	30	M8×1	2.64	SW5	M24*1.5	▲
HSK100A	BGPHSK100AHY10150M	10	30	57.8	150	121	98.5	30	M8×1	2.88	SW5	M24*1.5	▲
HSK100A	BGPHSK100AHY12095M	12	32	57.8	95	66	43.7	36	M8×1	2.63	SW5	M24*1.5	▲

转下页 see next page →

技术参数 | Technical parameters

单位 | Unit: mm

接口 Coupling	订货号 Ordering code	D1	D2	D3	L1	L2	L3	L4	G	重量 m (kg)	扳手 Key	水嘴 Nozzle	库存 Stock
HSK100A	BGPHSK100AHY12110M	12	32	57.8	110	81	58.7	36	M8×1	2.69	SW5	M24*1.5	▲
HSK100A	BGPHSK100AHY12150M	12	32	57.8	150	121	98.7	36	M8×1	2.93	SW5	M24*1.5	▲
HSK100A	BGPHSK100AHY14095M	14	34	57.8	95	66	43.9	36	M10×1	2.69	SW5	M24*1.5	▲
HSK100A	BGPHSK100AHY14150M	14	34	57.8	150	121	98.9	36	M10×1	3	SW5	M24*1.5	▲
HSK100A	BGPHSK100AHY16100M	16	38	57.8	100	71	49.2	40	M12×1	2.76	SW5	M24*1.5	▲
HSK100A	BGPHSK100AHY16150M	16	38	57.8	150	121	99.2	40	M12×1	3.14	SW5	M24*1.5	▲
HSK100A	BGPHSK100AHY18100M	18	40	57.8	100	71	49.4	41	M12×1	2.79	SW5	M24*1.5	▲
HSK100A	BGPHSK100AHY18150M	18	40	57.8	150	121	99.4	41	M12×1	3.21	SW5	M24*1.5	▲
HSK100A	BGPHSK100AHY20105M	20	42	57.8	105	76	54.6	41	M12×1	2.87	SW5	M24*1.5	●
HSK100A	BGPHSK100AHY20150M	20	42	57.8	150	121	99.6	41	M12×1	3.26	SW5	M24*1.5	▲
HSK100A	BGPHSK100AHY25110M	25	57	64.8	110	81	60.3	47	M16×1	3.44	SW5	M24*1.5	▲
HSK100A	BGPHSK100AHY32110M	32	63	74.8	110	81	59.9	51	M16×1	3.66	SW6	M24*1.5	●
HSK100A	BGPHSK100AHY32150M	32	63	74.8	150	121	99.9	51	M16×1	4.58	SW6	M24*1.5	▲

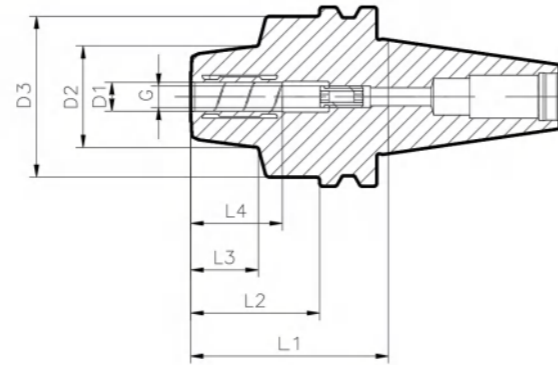
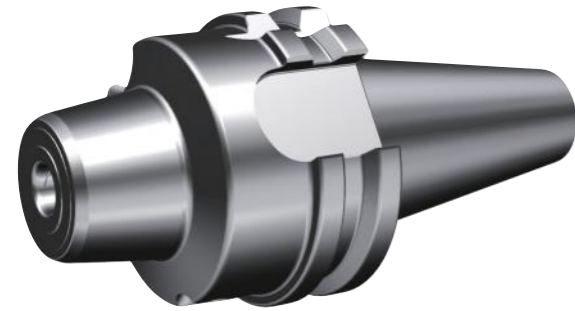
供货期: ● 可供现货 ▲ 交货时间短 ○ 按需求定制

Availability: ● available in stock ▲ short lead time ○ on request

- 刀具柄部公差等级: h6
- 配合减径套夹持, 实现更灵活的夹持范围
- 标准发货范围不含驱动扳手
- 可按要求定制其他尺寸和特殊设计
- 如需单独订购水嘴, 请参照60页
- Tolerance class of tool shank: h6
- Clamping with Reduction bushes, to achieve more flexible clamping range
- Drive key is not included in the standard order
- Additional sizes and special designs available on request
- Nozzle need to be ordered seperately. Please refer to P60

通用型/GP SK30A

DIN 69871



- 在2.5xD处回转精度≤0.003mm
- 转速为25,000 rpm时，平衡质量等级达到G2.5或Umax < 1 g·mm
- 轴向长度可调节

- Runout ≤ 0.003mm at 2.5D
- Balancing Grade: G2.5 at 25,000 rpm or Umax < 1 g·mm
- With adjustable axial length

技术参数 | Technical parameters

单位 | Unit: mm

接口 Coupling	订货号 Ordering code	D1	D2	D3	L1	L2	L3	L4	G	重量 m (kg)	扳手 Key	库存 Stock
SK30A	BGPSK30AHY06055M	6	26	44.8	55	35.9	18.5	26	M5	0.63	SW5	○
SK30A	BGPSK30AHY08055M	8	28	44.8	55	35.9	18.7	26	M6	0.63	SW5	○
SK30A	BGPSK30AHY10055M	10	30	44.8	55	35.9	19	30	M8×1	0.63	SW5	○
SK30A	BGPSK30AHY12055M	12	32	44.8	55	35.9	19.3	36	M8×1	0.64	SW5	○
SK30A	BGPSK30AHY16090M	16	38	44.8	90	70.9	48	40	M12×1	0.98	SW5	○
SK30A	BGPSK30AHY20090M	20	42	44.8	90	70.9	48.7	41	M12×1	1.03	SW5	○

供货期: ● 可供现货 ▲ 交货时间短 ○ 按需求定制

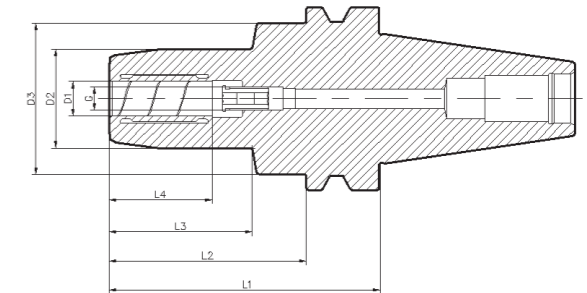
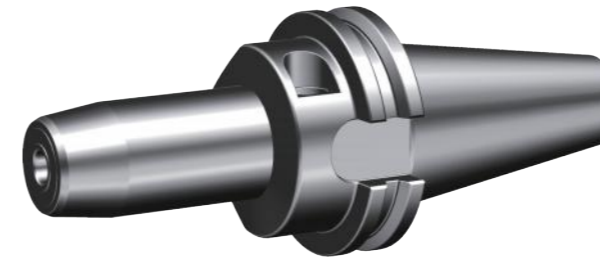
Availability: ● available in stock ▲ short lead time ○ on request

- 刀具柄部公差等级: h6
- 配合减径套夹持，实现更灵活的夹持范围
- 标准发货范围不含驱动板手
- 可按要求定制其他尺寸和特殊设计

- Tolerance class of tool shank: h6
- Clamping with Reduction bushes, to achieve more flexible clamping range
- Drive key is not included in the standard order
- Additional sizes and special designs available on request

通用型/GP SK40A

DIN 69871



- 在2.5xD处回转精度≤0.003mm
- 转速为25,000 rpm时，平衡质量等级达到G2.5或Umax < 1 g·mm
- 轴向长度可调节

- Runout ≤ 0.003mm at 2.5D
- Balancing Grade: G2.5 at 25,000 rpm or Umax < 1 g·mm
- With adjustable axial length

技术参数 | Technical parameters

单位 | Unit: mm

接口 Coupling	订货号 Ordering code	D1	D2	D3	L1	L2	L3	L4	G	重量 m (kg)	扳手 Key	库存 Stock
SK40A	BGPSK40AHY06080M	6	26	49.8	80	60.9	41.7	26	M5	1.23	SW5	▲
SK40A	BGPSK40AHY06110M	6	26	49.8	110	90.9	71.7	26	M5	1.35	SW5	▲
SK40A	BGPSK40AHY06120M	6	26	49.8	120	100.9	81.7	26	M5	1.4	SW5	▲
SK40A	BGPSK40AHY08080M	8	28	49.8	80	60.9	41.9	26	M6	1.25	SW5	▲
SK40A	BGPSK40AHY08110M	8	28	49.8	110	90.9	71.9	26	M6	1.4	SW5	▲
SK40A	BGPSK40AHY08120M	8	28	49.8	120	100.9	81.9	26	M6	1.45	SW5	▲
SK40A	BGPSK40AHY10080M	10	30	49.8	80	60.9	42.1	30	M8×1	1.29	SW5	▲
SK40A	BGPSK40AHY10110M	10	30	49.8	110	90.9	72.1	30	M8×1	1.47	SW5	▲
SK40A	BGPSK40AHY10120M	10	30	49.8	120	100.9	82.1	30	M8×1	1.53	SW5	○
SK40A	BGPSK40AHY12080M	12	32	49.8	80	60.9	42.2	36	M8×1	1.31	SW5	▲
SK40A	BGPSK40AHY12110M	12	32	49.8	110	90.9	72.2	36	M8×1	1.51	SW5	▲
SK40A	BGPSK40AHY12120M	12	32	49.8	120	100.9	82.2	36	M8×1	1.58	SW5	▲
SK40A	BGPSK40AHY14080M	14	34	49.8	80	60.9	42.4	36	M10×1	1.36	SW5	○
SK40A	BGPSK40AHY14120M	14	34	49.8	120	100.9	82.4	36	M10×1	1.7	SW5	○

转下页 see next page →

通用型/GP SK40A

DIN 69871

技术参数 | Technical parameters

单位 | Unit: mm

接口 Coupling	订货号 Ordering code	D1	D2	D3	L1	L2	L3	L4	G	重量 m (kg)	扳手 Key	库存 Stock
SK40A	BGPSK40AHY16080M	16	38	49.8	80	60.9	42.8	40	M12×1	1.38	SW5	▲
SK40A	BGPSK40AHY16110M	16	38	49.8	110	90.9	72.8	40	M12×1	1.66	SW5	▲
SK40A	BGPSK40AHY16120M	16	38	49.8	120	100.9	82.8	40	M12×1	1.76	SW5	○
SK40A	BGPSK40AHY18080M	18	40	49.8	80	60.9	42.9	41	M12×1	1.4	SW5	○
SK40A	BGPSK40AHY18120M	18	40	49.8	120	100.9	82.9	41	M12×1	1.82	SW5	○
SK40A	BGPSK40AHY20080M	20	42	49.8	80	60.9	43.1	41	M12×1	1.41	SW5	▲
SK40A	BGPSK40AHY20110M	20	42	49.8	110	90.9	73.1	41	M12×1	1.76	SW5	▲
SK40A	BGPSK40AHY20120M	20	42	49.8	120	100.9	83.1	41	M12×1	1.88	SW5	▲
SK40A	BGPSK40AHY25080M	25	57	64.8	80	60.9	27.2	47	M16×1	1.75	SW5	▲
SK40A	BGPSK40AHY25100M	25	57	64.8	100	80.9	47.2	47	M16×1	2.17	SW5	○
SK40A	BGPSK40AHY25120M	25	57	64.8	120	100.9	67.2	47	M16×1	2.58	SW5	○
SK40A	BGPSK40AHY32080M	32	63	74.8	80	60.9	31	51	M16×1	1.8	SW6	▲
SK40A	BGPSK40AHY32100M	32	63	74.8	100	80.9	43.8	51	M16×1	2.32	SW6	○
SK40A	BGPSK40AHY32120M	32	63	74.8	120	100.9	63.8	51	M16×1	2.8	SW6	○

供货期: ● 可供现货 ▲ 交货时间短 ○ 按需求定制

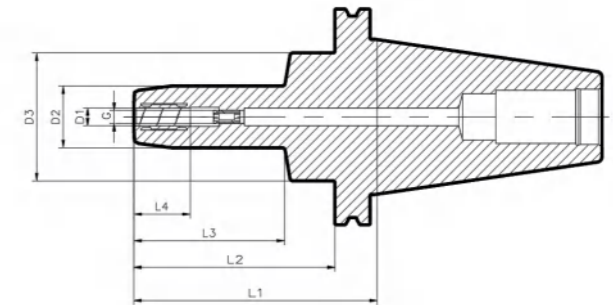
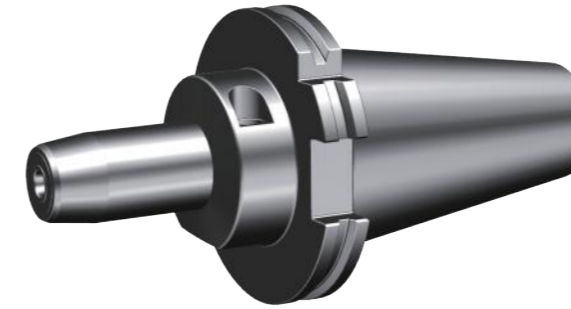
Availability: ● available in stock ▲ short lead time ○ on request

- 刀具柄部公差等级: h6
- 配合减径套夹持, 实现更灵活的夹持范围
- 标准发货范围不含驱动扳手
- 可按要求定制其他尺寸和特殊设计

- Tolerance class of tool shank: h6
- Clamping with Reduction bushes, to achieve more flexible clamping range
- Drive key is not included in the standard order
- Additional sizes and special designs available on request

通用型/GP SK50A

DIN 69871



- 在2.5xD处回转精度≤0.003mm
- 转速为25,000 rpm时, 平衡质量等级达到G2.5或Umax < 1 g·mm
- 轴向长度可调节

- Runout ≤ 0.003mm at 2.5D
- Balancing Grade: G2.5 at 25,000 rpm or Umax < 1 g·mm
- With adjustable axial length

技术参数 | Technical parameters

单位 | Unit: mm

接口 Coupling	订货号 Ordering code	D1	D2	D3	L1	L2	L3	L4	G	重量 m (kg)	扳手 Key	库存 Stock
SK50A	BGPSK50AHY06110M	6	26	57.8	110	90.9	68	26	M5	3.31	SW5	▲
SK50A	BGPSK50AHY06110M	6	26	57.8	110	90.9	68	26	M5	3.28	SW5	▲
SK50A	BGPSK50AHY06150M	6	26	57.8	150	130.9	108	26	M5	3.43	SW5	▲
SK50A	BGPSK50AHY08110M	8	28	57.8	110	90.9	68.2	26	M6	3.34	SW5	▲
SK50A	BGPSK50AHY08110M	8	28	57.8	110	90.9	68.2	26	M6	3.31	SW5	▲
SK50A	BGPSK50AHY08150M	8	28	57.8	150	130.9	108.2	26	M6	3.48	SW5	▲
SK50A	BGPSK50AHY10110M	10	30	57.8	110	90.9	68.3	30	M8×1	3.39	SW5	▲
SK50A	BGPSK50AHY10110M	10	30	57.8	110	90.9	68.3	30	M8×1	3.33	SW5	▲
SK50A	BGPSK50AHY10150M	10	30	57.8	150	130.9	108.3	30	M8×1	3.52	SW5	▲
SK50A	BGPSK50AHY12110M	12	32	57.8	110	90.9	68.5	36	M8×1	3.44	SW5	▲
SK50A	BGPSK50AHY12110M	12	32	57.8	110	90.9	68.5	36	M8×1	3.36	SW5	▲

转下页 see next page →

通用型/GP SK50A

技术参数 | Technical parameters

单位 | Unit: mm

接口 Coupling	订货号 Ordering code	D1	D2	D3	L1	L2	L3	L4	G	重量 m (kg)	扳手 Key	库存 Stock
SK50A	BGPSK50AHY12150M	12	32	57.8	150	130.9	108.5	36	M8×1	3.59	SW5	▲
SK50A	BGPSK50AHY14110M	14	34	57.8	110	90.9	68.7	36	M10×1	3.51	SW5	○
SK50A	BGPSK50AHY14110M	14	34	57.8	110	90.9	68.7	36	M10×1	3.38	SW5	▲
SK50A	BGPSK50AHY14150M	14	34	57.8	150	130.9	108.7	36	M10×1	3.63	SW5	▲
SK50A	BGPSK50AHY16110M	16	38	57.8	110	90.9	69.1	40	M12×1	3.56	SW5	▲
SK50A	BGPSK50AHY16110M	16	38	57.8	110	90.9	69.1	40	M12×1	3.38	SW5	▲
SK50A	BGPSK50AHY16150M	16	38	57.8	150	130.9	109.1	40	M12×1	3.81	SW5	▲
SK50A	BGPSK50AHY18110M	18	40	57.8	110	90.9	69.2	41	M12×1	3.61	SW5	○
SK50A	BGPSK50AHY18110M	18	40	57.8	110	90.9	69.2	41	M12×1	3.53	SW5	▲
SK50A	BGPSK50AHY18150M	18	40	57.8	150	130.9	109.2	41	M12×1	3.9	SW5	▲
SK50A	BGPSK50AHY20080M	20	42	57.8	80	60.9	39.4	41	M12×1	3.32	SW5	▲
SK50A	BGPSK50AHY20110M	20	42	57.8	110	90.9	69.4	41	M12×1	3.66	SW5	▲
SK50A	BGPSK50AHY20110M	20	42	57.8	110	90.9	69.4	41	M12×1	3.58	SW5	▲
SK50A	BGPSK50AHY20150M	20	42	57.8	150	130.9	109.4	41	M12×1	3.98	SW5	▲
SK50A	BGPSK50AHY32105M	32	63	70.8	105	85.9	65.1	51	M16×1	4.39	SW6	▲
SK50A	BGPSK50AHY32110M	32	63	70.8	110	90.9	70.1	51	M16×1	4.51	SW6	▲
SK50A	BGPSK50AHY32110M	32	63	70.8	110	90.9	70.1	51	M16×1	4.39	SW6	▲

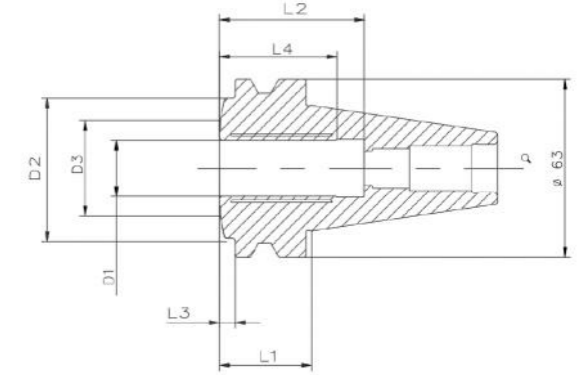
供货期: ● 可供现货 ▲ 交货时间短 ○ 按需求定制

Availability: ● available in stock ▲ short lead time ○ on request

- 刀具柄部公差等级: h6
- 配合减径套夹持, 实现更灵活的夹持范围
- 标准发货范围不含驱动扳手
- 可按要求定制其他尺寸和特殊设计
- 如需单独订购水嘴, 请参照60页

- Tolerance class of tool shank: h6
- Clamping with Reduction bushes, to achieve more flexible clamping range
- Drive key is not included in the standard order
- Additional sizes and special designs available on request
- Nozzle need to be ordered separately. Please refer to P60

通用型/GP 超短型 Extra short design



- 在2.5xD处回转精度≤0.003mm
- 转速为25,000 rpm时, 平衡质量等级达到G2.5或Umax < 1 g·mm
- 超短型
- 用于自动换刀

- Runout ≤ 0.003mm at 2.5D
- Balancing Grade: G2.5 at 25,000 rpm or Umax < 1 g·mm
- Extra short design
- For automatic tool change

技术参数 | Technical parameters

单位 | Unit: mm

接口 Coupling	标准 Standard	订货号 Ordering code	D1	D2	D3	L1	L2	L3	L4	重量 m (kg)	库存 Stock
SK40A	DIN69871	BGPSK40AHY20025M	20	49.5	34	24.6	51	5.5	41	0.8	○
SK50A	DIN69871	BGPSK50AHY32031M	32	70.5	44.5	30.9	61	11.85	51	2.52	○
BT40A	JISB6339	BGPBT40AHY20033M	20	49.5	34	32.5	51	5.5	41	1.3	○

供货期: ● 可供现货 ▲ 交货时间短 ○ 按需求定制

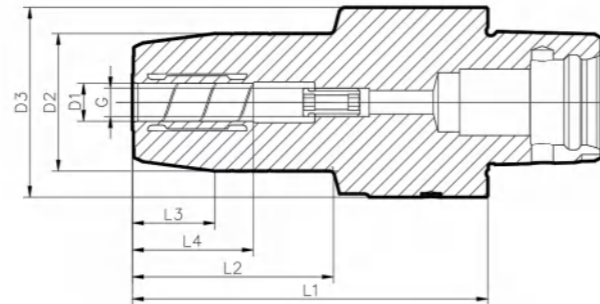
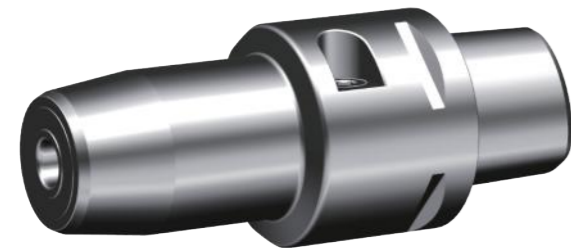
Availability: ● available in stock ▲ short lead time ○ on request

- 刀具柄部公差等级: h6
- 配合减径套夹持, 实现更灵活的夹持范围
- 标准发货范围不含驱动扳手
- 可按要求定制其他尺寸和特殊设计

- Tolerance class of tool shank: h6
- Clamping with Reduction bushes, to achieve more flexible clamping range
- Drive key is not included in the standard order
- Additional sizes and special designs available on request

通用型/GP PSC40A

IOS 26623



- 在2.5xD处回转精度≤0.003mm
- 转速为25,000 rpm时，平衡质量等级达到G2.5或Umax < 1 g·mm
- 轴向长度可调节

- Runout ≤ 0.003mm at 2.5D
- Balancing Grade: G2.5 at 25,000 rpm or Umax < 1 g·mm
- With adjustable axial length

技术参数 | Technical parameters

单位 | Unit: mm

接口 Coupling	订货号 Ordering code	D1	D2	D3	L1	L2	L3	L4	G	重量 m (kg)	扳手 Key	库存 Stock
PSC40A	BGPPSC40AHY06066M	6	26	40	66	33	17.4	26	M5	0.47	SW4	○
PSC40A	BGPPSC40AHY08066M	8	28	40	66	33.3	17.4	26	M6	0.49	SW4	○
PSC40A	BGPPSC40AHY10076M	10	30	40	76	43.6	17.4	30	M8×1	0.57	SW4	○
PSC40A	BGPPSC40AHY12081M	12	32	40	81	48.8	17.4	36	M8×1	0.63	SW4	○

供货期: ● 可供现货 ▲ 交货时间短 ○ 按需求定制

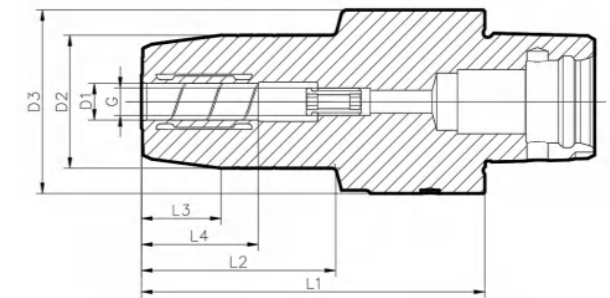
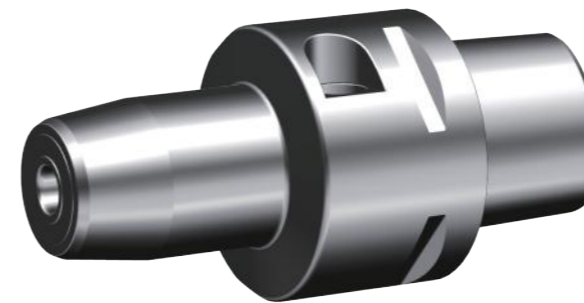
Availability: ● available in stock ▲ short lead time ○ on request

- 刀具柄部公差等级: h6
- 配合减径套夹持，实现更灵活的夹持范围
- 标准发货范围不含驱动扳手
- 可按要求定制其他尺寸和特殊设计

- Tolerance class of tool shank: h6
- Clamping with Reduction bushes, to achieve more flexible clamping range
- Drive key is not included in the standard order
- Additional sizes and special designs available on request

通用型/GP PSC50A

IOS 26623



- 在2.5xD处回转精度≤0.003mm
- 转速为25,000 rpm时，平衡质量等级达到G2.5或Umax < 1 g·mm
- 轴向长度可调节

- Runout ≤ 0.003mm at 2.5D
- Balancing Grade: G2.5 at 25,000 rpm or Umax < 1 g·mm
- With adjustable axial length

技术参数 | Technical parameters

单位 | Unit: mm

接口 Coupling	订货号 Ordering code	D1	D2	D3	L1	L2	L3	L4	G	重量 m (kg)	扳手 Key	库存 Stock
PSC50A	BGPPSC50AHY06070M	6	26	50	70	34.8	17.4	26	M5	0.75	SW5	○
PSC50A	BGPPSC50AHY08070M	8	28	50	70	35	17.4	26	M6	0.77	SW5	○
PSC50A	BGPPSC50AHY10080M	10	30	50	80	45.1	17.4	30	M8×1	0.85	SW5	○
PSC50A	BGPPSC50AHY12085M	12	32	50	85	50.3	17.4	36	M8×1	0.91	SW5	○
PSC50A	BGPPSC50AHY14085M	14	34	50	85	50.5	17.4	36	M10×1	0.98	SW5	○
PSC50A	BGPPSC50AHY16090M	16	38	50	90	55.8	17.4	40	M12×1	1.05	SW5	○
PSC50A	BGPPSC50AHY18090M	18	40	50	90	56	17.4	41	M12×1	1.08	SW5	○
PSC50A	BGPPSC50AHY20090M	20	42	50	90	56.2	17.4	41	M12×1	1.11	SW5	○

供货期: ● 可供现货 ▲ 交货时间短 ○ 按需求定制

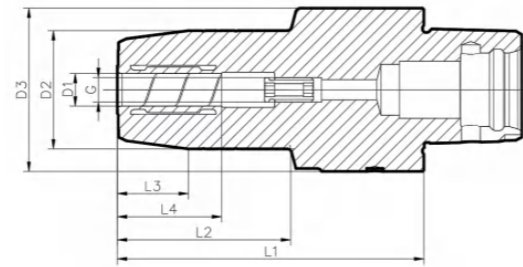
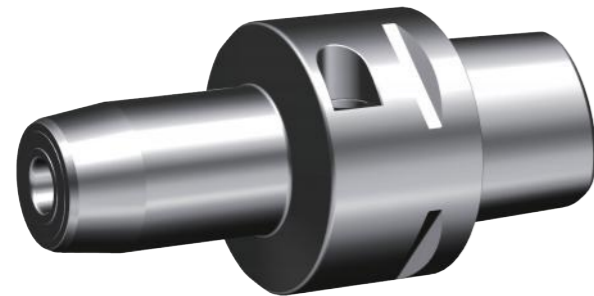
Availability: ● available in stock ▲ short lead time ○ on request

- 刀具柄部公差等级: h6
- 配合减径套夹持，实现更灵活的夹持范围
- 标准发货范围不含驱动扳手
- 可按要求定制其他尺寸和特殊设计

- Tolerance class of tool shank: h6
- Clamping with Reduction bushes, to achieve more flexible clamping range
- Drive key is not included in the standard order
- Additional sizes and special designs available on request

通用型/GP PSC63A

IOS 26623



- 在2.5xD处回转精度≤0.003mm
- 转速为25,000 rpm时，平衡质量等级达到G2.5或Umax < 1 g·mm
- 轴向长度可调节

- Runout ≤ 0.003mm at 2.5D
- Balancing Grade: G2.5 at 25,000 rpm or Umax < 1 g·mm
- With adjustable axial length

技术参数 | Technical parameters

单位 | Unit: mm

接口 Coupling	订货号 Ordering code	D1	D2	D3	L1	L2	L3	L4	G	重量 m (kg)	扳手 Key	库存 Stock
PSC63A	BGPPSC63AHY08072M	8	28	63	72	30.8	17.4	26	M6	1.3	SW5	○
PSC63A	BGPPSC63AHY10082M	10	30	63	82	41	17.4	30	M8×1	1.38	SW5	○
PSC63A	BGPPSC63AHY12087M	12	32	63	87	46.1	17.4	36	M8×1	1.44	SW5	○
PSC63A	BGPPSC63AHY14087M	14	34	63	87	46.3	17.4	36	M10×1	1.49	SW5	○
PSC63A	BGPPSC63AHY16092M	16	38	63	92	51.7	17.4	40	M12×1	1.56	SW5	○
PSC63A	BGPPSC63AHY18092M	18	40	63	92	50.9	17.4	41	M12×1	1.59	SW5	○
PSC63A	BGPPSC63AHY20097M	20	42	63	97	56	17.4	41	M12×1	1.67	SW5	○
PSC63A	BGPPSC63AHY25102M	25	57	63	102	62.4	17.4	47	M16×1	2.11	SW5	○
PSC63A	BGPPSC63AHY32110M	32	63	75	110	60.9	17.4	51	M16×1	2.5	SW6	○

供货期: ● 可供现货 ▲ 交货时间短 ○ 按需求定制

Availability: ● available in stock ▲ short lead time ○ on request

- 刀具柄部公差等级: h6
- 配合减径套夹持，实现更灵活的夹持范围
- 标准发货范围不含驱动扳手
- 可按要求定制其他尺寸和特殊设计

- Tolerance class of tool shank: h6
- Clamping with Reduction bushes, to achieve more flexible clamping range
- Drive key is not included in the standard order
- Additional sizes and special designs available on request

强力型液压刀柄

HIGH TORQUE

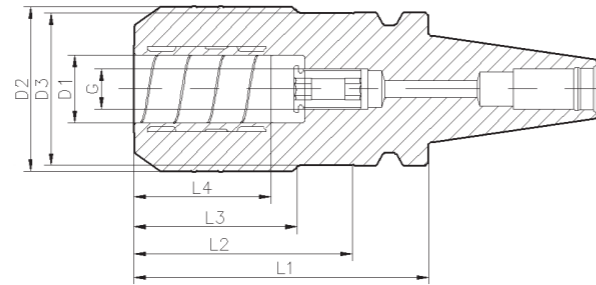
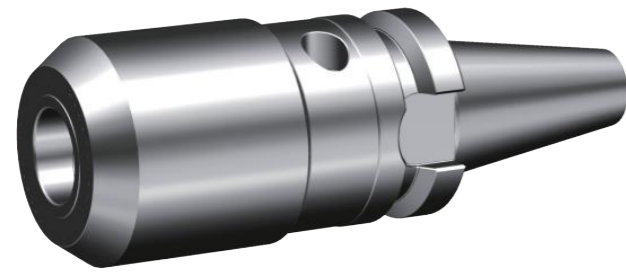
- 适用于大负载原材料粗加工；
- 可传递扭力高达900Nm；
- 在2.5xD处回转精度≤0.003mm；
- 转速为25000rpm时，平衡质量等级达到G2.5或Umax < 1 g·mm。

- For rough machining of raw materials with heavy load;
- The torque can be up to 900Nm;
- Runout ≤ 0.003mm at 2.5D;
- Balancing Grade: G2.5 at 25,000 rpm or Umax < 1 g·mm.



强力型/HQ BT30A

JIS B 6339



- 在2.5xD处回转精度≤0.003mm
- 转速为25,000 rpm时，平衡质量等级达到G2.5或Umax < 1 g·mm
- 轴向长度可调节

- Runout ≤ 0.003mm at 2.5D
- Balancing Grade: G2.5 at 25,000 rpm or Umax < 1 g·mm
- With adjustable axial length

技术参数 | Technical parameters

单位 | Unit: mm

接口 Coupling	订货号 Ordering code	D1	D2	D3	L1	L2	L3	L4	G	重量 m (kg)	扳手 Key	库存 Stock
BT30A	BHQBT30AHY12069M	12	42	45.5	69	44.2	28	36	M8×1	0.85	SW5	●
BT30A	BHQBT30AHY20090M	20	49	45.5	90	65.2	48	41	M12×1	1.16	SW5	●

供货期: ● 可供现货 ▲ 交货时间短 ○ 按需求定制

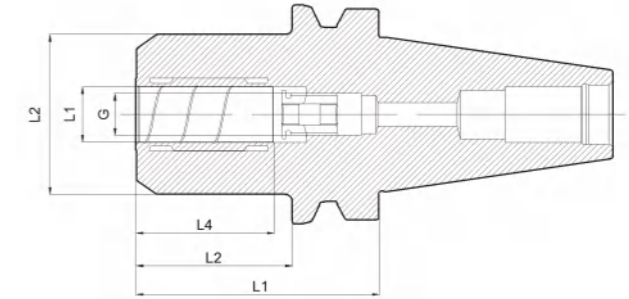
Availability: ● available in stock ▲ short lead time ○ on request

- 刀具柄部公差等级: h6
- 配合减径套夹持，实现更灵活的夹持范围
- 标准发货范围不含驱动扳手
- 可按要求定制其他尺寸和特殊设计
- 拉钉选配详见通用刀柄样册P43-44

- Tolerance class of tool shank: h6
- Clamping with Reduction bushes, to achieve more flexible clamping range
- Drive key is not included in the standard order
- Additional sizes and special designs available on request
- Pull stud choose, see the sample book of General Tool Holder P43-44

强力型/HQ BT40A

JIS B 6339



- 在2.5xD处回转精度≤0.003mm
- 转速为25,000 rpm时，平衡质量等级达到G2.5或Umax < 1 g·mm
- 轴向长度可调节

- Runout ≤ 0.003mm at 2.5D
- Balancing Grade: G2.5 at 25,000 rpm or Umax < 1 g·mm
- With adjustable axial length

技术参数 | Technical parameters

单位 | Unit: mm

接口 Coupling	订货号 Ordering code	D1	D2	D3	L1	L2	L3	L4	G	重量 m (kg)	扳手 Key	库存 Stock
BT40A	BHQBT40AHY12058M	12	42	42	58	31	31	36	M8×1	1.25	SW5	●
BT40A	BHQBT40AHY16072M	16	49	49	72	45	45	40	M12×1	1.44	SW5	●
BT40A	BHQBT40AHY20072M	20	49	49	72	45	45	41	M12×1	1.39	SW5	●

供货期: ● 可供现货 ▲ 交货时间短 ○ 按需求定制

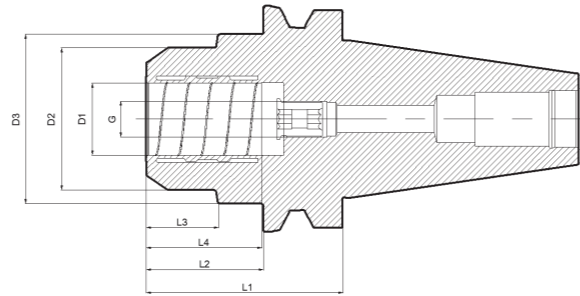
Availability: ● available in stock ▲ short lead time ○ on request

- 刀具柄部公差等级: h6
- 配合减径套夹持，实现更灵活的夹持范围
- 标准发货范围不含驱动扳手
- 可按要求定制其他尺寸和特殊设计
- 拉钉选配详见通用刀柄样册P43-44

- Tolerance class of tool shank: h6
- Clamping with Reduction bushes, to achieve more flexible clamping range
- Drive key is not included in the standard order
- Additional sizes and special designs available on request
- Pull stud choose, see the sample book of General Tool Holder P43-44

强力型/HQ BT50A

DIN 69893



- 在2.5xD处回转精度≤0.003mm
- 转速为25000 rpm 时动平衡等级达到G2.5或Umax < 1 g·mm
- 轴向长度可调节

- Runout ≤ 0.003mm at 2.5D
- Balancing Grade: G2.5 at 25,000 rpm or Umax < 1 g·mm
- With adjustable axial length

技术参数 | Technical parameters

单位 | Unit: mm

接口 Coupling	订货号 Ordering code	D1	D2	D3	L1	L2	L3	L4	G	重量 m (kg)	扳手 Key	库存 Stock
BT50A	BHQBT50AHY12069M	12	42	42	69	31	31	36	M8×1	3.92	SW5	●
BT50A	BHQBT50AHY20083M	20	49	58	83	45	28	41	M10×1	4.18	SW5	●
BT50A	BHQBT50AHY32090M	32	72	72	90	52	52	51	M16×1	4.58	SW6	●

供货期: ● 可供现货 ▲ 交货时间短 ○ 按需求定制

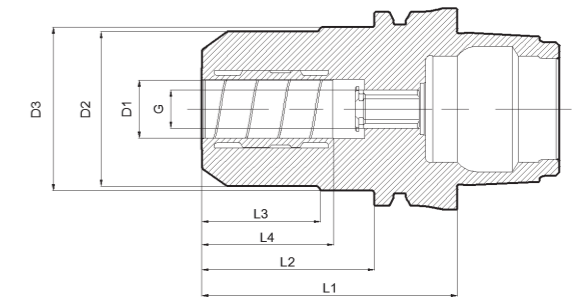
Availability: ● available in stock ▲ short lead time ○ on request

- 刀具柄部公差等级: h6
- 配合减径套夹持, 实现更灵活的夹持范围
- 标准发货范围不含驱动扳手
- 可按要求定制其他尺寸和特殊设计
- 拉钉选配详见通用刀柄P43-44

- Tolerance class of tool shank: h6
- Clamping with Reduction bushes, to achieve more flexible clamping range
- Drive key is not included in the standard order
- Additional sizes and special designs available on request
- Pull stud choose, see the sample book of General Tool Holder P43-44

强力型/HQ HSK63A

DIN 69893



- 在2.5xD处回转精度≤0.003mm
- 转速为25,000 rpm时, 平衡质量等级达到G2.5或Umax < 1 g·mm
- 轴向长度可调节

- Runout ≤ 0.003mm at 2.5D
- Balancing Grade: G2.5 at 25,000 rpm or Umax < 1 g·mm
- With adjustable axial length

技术参数 | Technical parameters

单位 | Unit: mm

接口 Coupling	订货号 Ordering code	D1	D2	D3	L1	L2	L3	L4	G	重量 m (kg)	扳手 Key	水嘴 Nozzle	库存 Stock
HSK63A	BHQHSK63AHY12080M	12	42	51.8	80	54	36.1	36	M8×1	1.24	SW5	M18*1	●
HSK63A	BHQHSK63AHY16080M	16	49	51.8	80	54	36.8	40	M12×1	1.28	SW5	M18*1	●
HSK63A	BHQHSK63AHY20080M	20	49	51.8	80	54	36.8	41	M12×1	1.28	SW5	M18*1	●

供货期: ● 可供现货 ▲ 交货时间短 ○ 按需求定制

Availability: ● available in stock ▲ short lead time ○ on request

- 刀具柄部公差等级: h6
- 配合减径套夹持, 实现更灵活的夹持范围
- 标准发货范围不含驱动扳手
- 可按要求定制其他尺寸和特殊设计
- 拉钉选配详见通用刀柄P43-44
- 如需单独订购水嘴, 请参照P60

- Tolerance class of tool shank: h6
- Clamping with Reduction bushes, to achieve more flexible clamping range
- Drive key is not included in the standard order
- Additional sizes and special designs available on request
- Pull stud choose, see the sample book of General Tool Holder P43-44
- Nozzle need to be ordered seperately. Please refer to P60

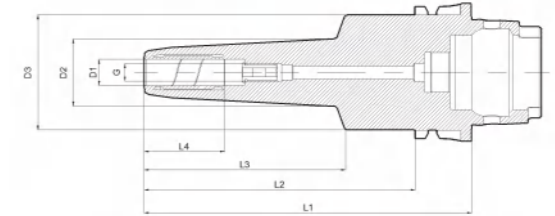
模具型液压刀柄 MOLD & DIE

- 适用于深腔及模具产品深轮廓切削加工；
- 在2.5xD处回转精度<0.006mm；
- 转速为25000rpm时，平衡质量等级达到G2.5或Umax < 1 g·mm。
- For deep contour cutting of deep cavity and mold products;
- Runout < 0.006mm at 2.5D;
- Balancing Grade: G2.5 at 25,000 rpm or Umax < 1 g·mm.



模具型/DM HSK63A

DIN 69893



- 在2.5xD处回转精度<0.006mm
- 转速为25,000 rpm时，平衡质量等级达到G2.5或Umax < 1 g·mm
- 轴向长度可调节
- Runout < 0.006mm at 2.5D
- Balancing Grade: G2.5 at 25,000 rpm or Umax < 1 g·mm
- With adjustable axial length

技术参数 | Technical parameters

单位 | Unit: mm

接口 Coupling	订货号 Ordering code	D1	D2	D3	L1	L2	L3	L4	G	重量 m (kg)	扳手 Key	水嘴 Nozzle	库存 Stock
HSK63A	BDMHSK63AHY06150M	6	25	50.5	150	124	87.3	27	M5	1.41	SW5	M18*1	●
HSK63A	BDMHSK63AHY06200M	6	26	50.5	200	174	137.5	27	M5	1.6	SW5	M18*1	○
HSK63A	BDMHSK63AHY08150M	8	27	50.5	150	124	87.7	27	M6	1.44	SW5	M18*1	●
HSK63A	BDMHSK63AHY08200M	8	32	50.5	200	174	138.7	27	M6	1.67	SW5	M18*1	○
HSK63A	BDMHSK63AHY10150M	10	28.9	50.5	150	124	88.1	31	M8×1	1.47	SW5	M18*1	●
HSK63A	BDMHSK63AHY10200M	10	30	50.5	200	174	138.3	31	M8×1	1.73	SW5	M18*1	○
HSK63A	BDMHSK63AHY12150M	12	30.9	52.5	150	124	88.1	37	M8×1	1.51	SW5	M18*1	●
HSK63A	BDMHSK63AHY12200M	12	36.2	52.5	200	174	139	37	M8×1	1.81	SW5	M18*1	○
HSK63A	BDMHSK63AHY14150M	14	33.5	50.5	150	124	88.8	37	M10×1	1.55	SW5	M18*1	▲
HSK63A	BDMHSK63AHY14200M	14	34	50.5	200	174	139	37	M10×1	1.89	SW5	M18*1	○
HSK63A	BDMHSK63AHY16150M	16	35.5	50.5	150	124	89.2	41	M12×1	1.58	SW5	M18*1	▲
HSK63A	BDMHSK63AHY16200M	16	36	50.5	200	174	139.4	41	M12×1	1.96	SW5	M18*1	○
HSK63A	BDMHSK63AHY18150M	18	38.1	50.5	150	124	89.6	42	M12×1	1.63	SW5	M18*1	○
HSK63A	BDMHSK63AHY18200M	18	38	50.5	200	174	139.7	42	M12×1	2.06	SW5	M18*1	○
HSK63A	BDMHSK63AHY20150M	20	39.1	50.5	150	124	89.9	42	M12×1	1.68	SW5	M18*1	●
HSK63A	BDMHSK63AHY20200M	20	40	50.5	200	174	140.1	42	M12×1	2.15	SW5	M18*1	○

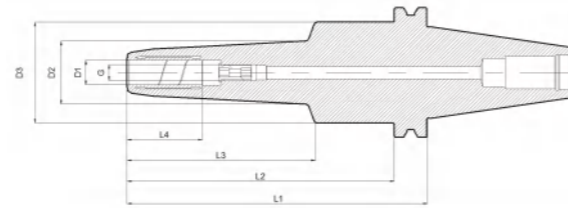
供货期: ● 可供现货 ▲ 交货时间短 ○ 按需求定制

Availability: ● available in stock ▲ short lead time ○ on request

- 刀具柄部公差等级: h6
- 配合减径套夹持，实现更灵活的夹持范围
- 标准发货范围不含驱动扳手
- 可按要求定制其他尺寸和特殊设计
- 如需单独订购水嘴，请参照60页
- Tolerance class of tool shank: h6
- Clamping with Reduction bushes, to achieve more flexible clamping range
- Drive key is not included in the standard order
- Additional sizes and special designs available on request
- Nozzle need to be ordered separately. Please refer to P60

模具型/DM SK40A

DIN 69871



- 在2.5xD处回转精度<0.006mm
- 转速为25,000 rpm时，平衡质量等级达到G2.5或Umax < 1 g·mm
- 轴向长度可调节

- Runout < 0.006mm at 2.5D
- Balancing Grade: G2.5 at 25,000 rpm or Umax < 1 g·mm
- With adjustable axial length

技术参数 | Technical parameters

单位 | Unit: mm

接口 Coupling	订货号 Ordering code	D1	D2	D3	L1	L2	L3	L4	G	重量 m (kg)	扳手 Key	库存 Stock
SK40A	BDMSK40AHY06200M	6	26	49.5	200	180.9	137.7	27	M5	1.82	SW5	○
SK40A	BDMSK40AHY08200M	8	32	49.5	200	180.9	138.9	27	M6	1.89	SW5	○
SK40A	BDMSK40AHY10200M	10	30	49.5	200	180.9	138.5	31	M8×1	1.95	SW5	○
SK40A	BDMSK40AHY12200M	12	36.3	49.5	200	181.2	139.6	37	M8×1	2.1	SW5	○
SK40A	BDMSK40AHY14200M	14	34	49.5	200	180.9	139.2	37	N10×1	2.18	SW5	○
SK40A	BDMSK40AHY16200M	16	36	49.5	200	180.9	139.5	41	M12×1	2.28	SW5	○
SK40A	BDMSK40AHY18200M	18	38	49.5	200	180.9	139.9	42	M12×1	2.37	SW5	○
SK40A	BDMSK40AHY20200M	20	40	49.5	200	180.9	140.3	42	M12×1	2.48	SW5	○

供货期: ● 可供现货 ▲ 交货时间短 ○ 按需求定制

Availability: ● available in stock ▲ short lead time ○ on request

- 刀具柄部公差等级: h6
- 配合减径套夹持，实现更灵活的夹持范围
- 标准发货范围不含驱动扳手
- 可按要求定制其他尺寸和特殊设计

- Tolerance class of tool shank: h6
- Clamping with Reduction bushes, to achieve more flexible clamping range
- Drive key is not included in the standard order
- Additional sizes and special designs available on request

磨刀机刀柄

GRINDING MACHINE CHUCK

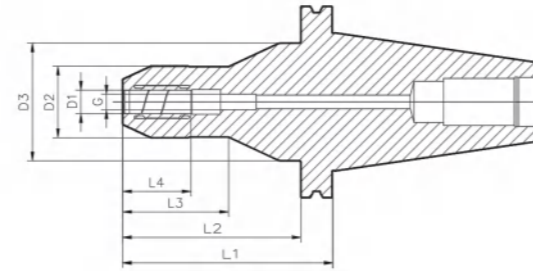
- 应用于工具磨设备工件夹持；
- 特有的轮廓设计，能有效避免加工时与砂轮产生干涉；
- 在2.5xD处回转精度≤0.003mm。

- For workpiece clamping with tool-grinding machine;
- The unique contour design can effectively avoid the interference with the grinding wheel during machining;
- Runout ≤ 0.003mm at 2.5D.



磨刀机刀柄/GM SK50A

DIN 69871



- 在2.5xD处回转精度≤0.003mm
- 用于刀具修磨和刃磨机床
- 手动驱动

- Runout ≤ 0.003mm at 2.5D
- For tool-sharpening and grinding machines
- Manual drive

技术参数 | Technical parameters

单位 | Unit: mm

接口 Coupling	订货号 Ordering code	D1	D2	D3	L1	L2	L3	L4	G	重量 m (kg)	扳手 Key	库存 Stock
SK50A	BGMSK50AHY12110M	12	36.5	60	110	90.9	54.1	36	M8×1	3.51	SW4	●
SK50A	BGMSK50AHY20110M	20	42	70	110	90.9	50.3	43	M12×1	3.69	SW4	●
SK50A	BGMSK50AHY32110M	32	54	70	110	90.9	62.4	53	M16×1	4.04	SW4	●

供货期: ● 可供现货 ▲ 交货时间短 ○ 按需求定制

Availability: ● available in stock ▲ short lead time ○ on request

- 刀具柄部公差等级: h6
- 配合减径套夹持, 实现更灵活的夹持范围
- 标准发货范围不含驱动扳手
- 可按要求定制其他尺寸和特殊设计

- Tolerance class of tool shank: h6
- Clamping with Reduction bushes, to achieve more flexible clamping range
- Drive key is not included in the standard order
- Additional sizes and special designs available on request

减径套

REDUCTION BUSHES

- 配合液压刀柄使用, 实现灵活的夹持范围。
- Used with hydraulic chuck to realize flexible clamping range.



◎ 命名方式 | Naming And Coding Rules

减径套 ISL12-IC

ISL	减径套 Reduction Bushes
-----	------------------------

01. 产品名称 | PRODUCT NAME

ISL 01 0120 02 0040 03 M 04 IC 05 AA 06

M	公制 Metric
I	英制 Inch

04. 制式 | FORMAT

AA ≤ 3μm

06. 精度等级 | ACCURACY GRADE

IC	内部冷却 Internal Cooling
PC	端面冷却 End-face Cooling

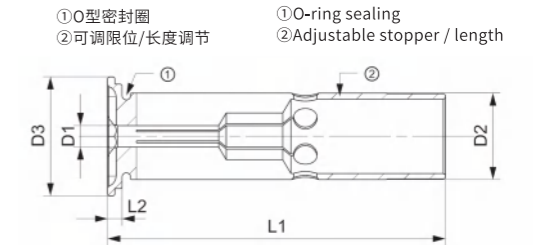
05. 类型 | TYPE

夹持	12mm
外径	20mm
	25mm
	32mm

02. 接口规格 | COUPLING TYPE

3mm	13mm
4mm	14mm
5mm	15mm
6mm	16mm
7mm	18mm
8mm	20mm
9mm	25mm
10mm	
11mm	
12mm	

03. 夹持孔直径 | DIAMETER



- 内部冷却
- 端面密封
- 可承受冷却液压力高达80bar

- Internal cooling
- Closed collar
- Can withstand cooling up to 80bar

技术参数 | Technical parameters

单位 | Unit: mm

订货号 Ordering code	D1	D2	D3	L1	L2	库存 Stock	精度等级 Accuracy grade
ISL01200030MIC-AA	3	12	16.5	47	2	●	AA
ISL01200040MIC-AA	4	12	16.5	47	2	●	AA
ISL01200050MIC-AA	5	12	16.5	47	2	●	AA
ISL01200060MIC-AA	6	12	16.5	47	2	●	AA
ISL01200080MIC-AA	8	12	16.5	47	2	●	AA
ISL01200100MIC-AA	10	12	16.5	47	2	●	AA

供货期: ● 可供现货 ▲ 交货时间短 ○ 按需求定制

Availability: ● available in stock ▲ short lead time ○ on request

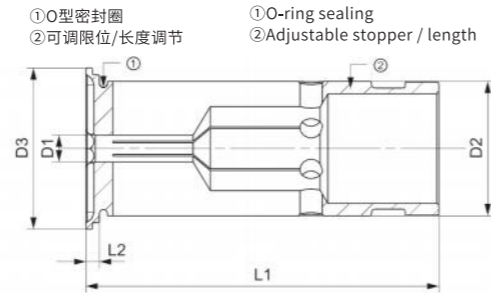
精度等级: AA ≤ 3μm

Accuracy grade: AA ≤ 3μm

如有更高精度需要可支持定制

Support customization for higher precision

减径套 ISL20-IC



- 内部冷却
- 端面密封
- 可承受冷却液压力高达80bar

- Internal cooling
- Closed collar
- Can withstand cooling up to 80bar

技术参数 | Technical parameters

单位 | Unit: mm

订货号 Ordering code	D1	D2	D3	L1	L2	库存 Stock	精度等级 Accuracy grade
ISL02000030MIC-AA	3	20	24	52.5	2	●	AA
ISL02000040MIC-AA	4	20	24	52.5	2	●	AA
ISL02000050MIC-AA	5	20	24	52.5	2	●	AA
ISL02000060MIC-AA	6	20	24	52.5	2	●	AA
ISL02000070MIC-AA	7	20	24	52.5	2	●	AA
ISL02000080MIC-AA	8	20	24	52.5	2	●	AA
ISL02000090MIC-AA	9	20	24	52.5	2	●	AA
ISL02000100MIC-AA	10	20	24	52.5	2	●	AA
ISL02000110MIC-AA	11	20	24	52.5	2	●	AA
ISL02000120MIC-AA	12	20	24	52.5	2	●	AA
ISL02000130MIC-AA	13	20	24	52.5	2	●	AA
ISL02000140MIC-AA	14	20	24	52.5	2	●	AA
ISL02000150MIC-AA	15	20	24	52.5	2	●	AA
ISL02000160MIC-AA	16	20	24	52.5	2	●	AA

供货期: ● 可供现货 ▲ 交货时间短 ○ 按需求定制

精度等级: AA ≤ 3μm

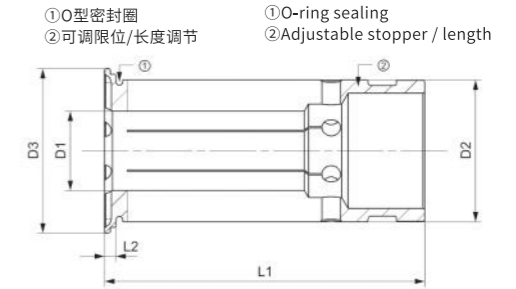
如有更高精度需要可支持定制

Availability: ● available in stock ▲ short lead time ○ on request

Accuracy grade: AA ≤ 3μm

Support customization for higher precision

减径套 ISL25-IC



- 内部冷却
- 端面密封
- 可承受冷却液压力高达80bar

- Internal cooling
- Closed collar
- Can withstand cooling up to 80bar

技术参数 | Technical parameters

单位 | Unit: mm

订货号 Ordering code	D1	D2	D3	L1	L2	库存 Stock	精度等级 Accuracy grade
ISL02500060MIC-AA	6	25	29	56.5	2	▲	AA
ISL02500080MIC-AA	8	25	29	56.5	2	▲	AA
ISL02500100MIC-AA	10	25	29	56.5	2	▲	AA
ISL02500120MIC-AA	12	25	29	56.5	2	▲	AA
ISL02500140MIC-AA	14	25	29	56.5	2	▲	AA
ISL02500160MIC-AA	16	25	29	56.5	2	▲	AA
ISL02500180MIC-AA	18	25	29	56.5	2	▲	AA
ISL02500200MIC-AA	20	25	29	56.5	2	▲	AA

供货期: ● 可供现货 ▲ 交货时间短 ○ 按需求定制

精度等级: AA ≤ 3μm

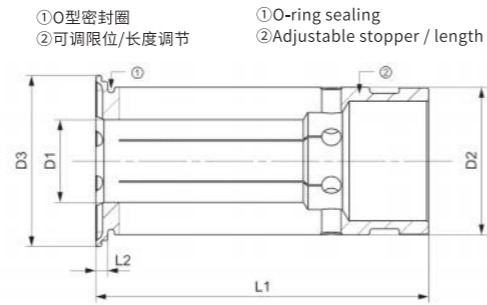
如有更高精度需要可支持定制

Availability: ● available in stock ▲ short lead time ○ on request

Accuracy grade: AA ≤ 3μm

Support customization for higher precision

减径套 ISL32-IC



- 内部冷却
- 端面密封
- 可承受冷却液压力高达80bar

- Internal cooling
- Closed collar
- Can withstand cooling up to 80bar

技术参数 | Technical parameters

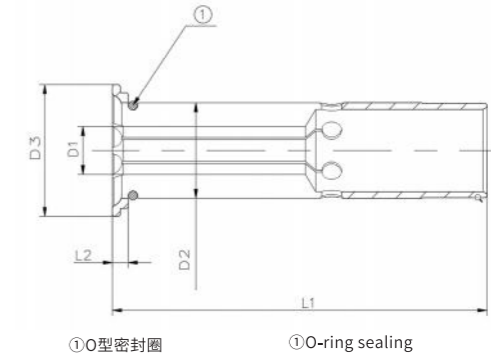
单位 | Unit: mm

订货号 Ordering code	D1	D2	D3	L1	L2	库存 Stock	精度等级 Accuracy grade
ISL03200060MIC-AA	6	32	35.5	62.5	2	●	AA
ISL03200080MIC-AA	8	32	35.5	62.5	2	●	AA
ISL03200100MIC-AA	10	32	35.5	62.5	2	●	AA
ISL03200120MIC-AA	12	32	35.5	62.5	2	●	AA
ISL03200140MIC-AA	14	32	35.5	62.5	2	●	AA
ISL03200160MIC-AA	16	32	35.5	62.5	2	●	AA
ISL03200180MIC-AA	18	32	35.5	62.5	2	●	AA
ISL03200200MIC-AA	20	32	35.5	62.5	2	●	AA
ISL03200250MIC-AA	25	32	35.5	62.5	2	●	AA

供货期: ● 可供现货 ▲ 交货时间短 ○ 按需求定制
 精度等级: AA ≤ 3μm
 如有更高精度需要可支持定制

Availability: ● available in stock ▲ short lead time ○ on request
 Accuracy grade: AA ≤ 3μm
 Support customization for higher precision

减径套 ILS12-PC



- 端面冷却
- 端面开槽
- 端面密封
- 无内冷设计

- End-face cooling
- End-face grooving
- End-face sealing
- No internal cooling design

技术参数 | Technical parameters

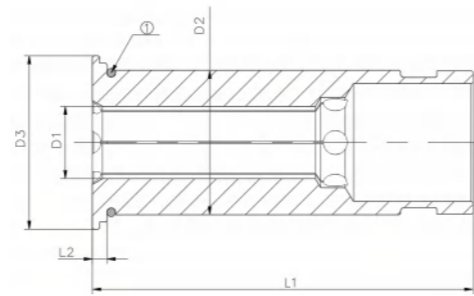
单位 | Unit: mm

订货号 Ordering code	D1	D2	D3	L1	L2	库存 Stock	精度等级 Accuracy grade
ISL01200030MPC-AA	3	12	16.5	47	2	●	AA
ISL01200040MPC-AA	4	12	16.5	47	2	●	AA
ISL01200050MPC-AA	5	12	16.5	47	2	●	AA
ISL01200060MPC-AA	6	12	16.5	47	2	●	AA
ISL01200080MPC-AA	8	12	16.5	47	2	●	AA

供货期: ● 可供现货 ▲ 交货时间短 ○ 按需求定制
 精度等级: AA ≤ 3μm
 如有更高精度需要可支持定制

Availability: ● available in stock ▲ short lead time ○ on request
 Accuracy grade: AA ≤ 3μm
 Support customization for higher precision

减径套 ISL20-PC



①O型密封圈 ①O-ring sealing

- 端面冷却
- 端面开槽
- 端面密封
- 无内冷设计

- End-face cooling
- End-face grooving
- End-face sealing
- No internal cooling design

技术参数 | Technical parameters

单位 | Unit: mm

订货号 Ordering code	D1	D2	D3	L1	L2	库存 Stock	精度等级 Accuracy grade
ISL02000030MPC-AA	3	20	24	52.5	2	●	AA
ISL02000040MPC-AA	4	20	24	52.5	2	●	AA
ISL02000050MPC-AA	5	20	24	52.5	2	●	AA
ISL02000060MPC-AA	6	20	24	52.5	2	●	AA
ISL02000070MPC-AA	7	20	24	52.5	2	●	AA
ISL02000080MPC-AA	8	20	24	52.5	2	●	AA
ISL02000090MPC-AA	9	20	24	52.5	2	●	AA
ISL02000100MPC-AA	10	20	24	52.5	2	●	AA
ISL02000110MPC-AA	11	20	24	52.5	2	●	AA
ISL02000120MPC-AA	12	20	24	52.5	2	●	AA
ISL02000130MPC-AA	13	20	24	52.5	2	●	AA
ISL02000140MPC-AA	14	20	24	52.5	2	●	AA
ISL02000150MPC-AA	15	20	24	52.5	2	●	AA
ISL02000160MPC-AA	16	20	24	52.5	2	●	AA

供货期: ● 可供现货 ▲ 交货时间短 ○ 按需求定制

精度等级: AA ≤ 3μm

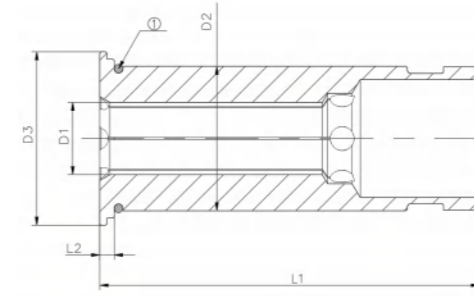
如有更高精度需要可支持定制

Availability: ● available in stock ▲ short lead time ○ on request

Accuracy grade: AA ≤ 3μm

Support customization for higher precision

减径套 ISL32-PC



①O型密封圈 ①O-ring sealing

- 端面冷却
- 端面开槽
- 端面密封
- 无内冷设计

- End-face cooling
- End-face grooving
- End-face sealing
- No internal cooling design

技术参数 | Technical parameters

单位 | Unit: mm

订货号 Ordering code	D1	D2	D3	L1	L2	库存 Stock	精度等级 Accuracy grade
ISL03200060MPC-AA	6	32	35.5	62.5	2	●	AA
ISL03200080MPC-AA	8	32	35.5	62.5	2	●	AA
ISL03200100MPC-AA	10	32	35.5	62.5	2	●	AA
ISL03200120MPC-AA	12	32	35.5	62.5	2	●	AA
ISL03200140MPC-AA	14	32	35.5	62.5	2	●	AA
ISL03200160MPC-AA	16	32	35.5	62.5	2	●	AA
ISL03200180MPC-AA	18	32	35.5	62.5	2	●	AA
ISL03200200MPC-AA	20	32	35.5	62.5	2	●	AA
ISL03200250MPC-AA	25	32	35.5	62.5	2	●	AA

供货期: ● 可供现货 ▲ 交货时间短 ○ 按需求定制

精度等级: AA ≤ 3μm

如有更高精度需要可支持定制

Availability: ● available in stock ▲ short lead time ○ on request

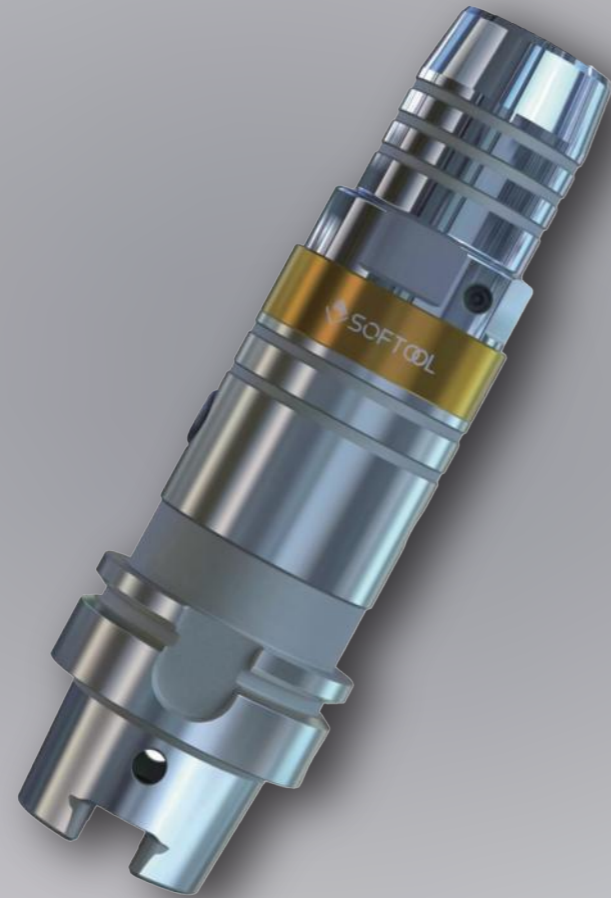
Accuracy grade: AA ≤ 3μm

Support customization for higher precision

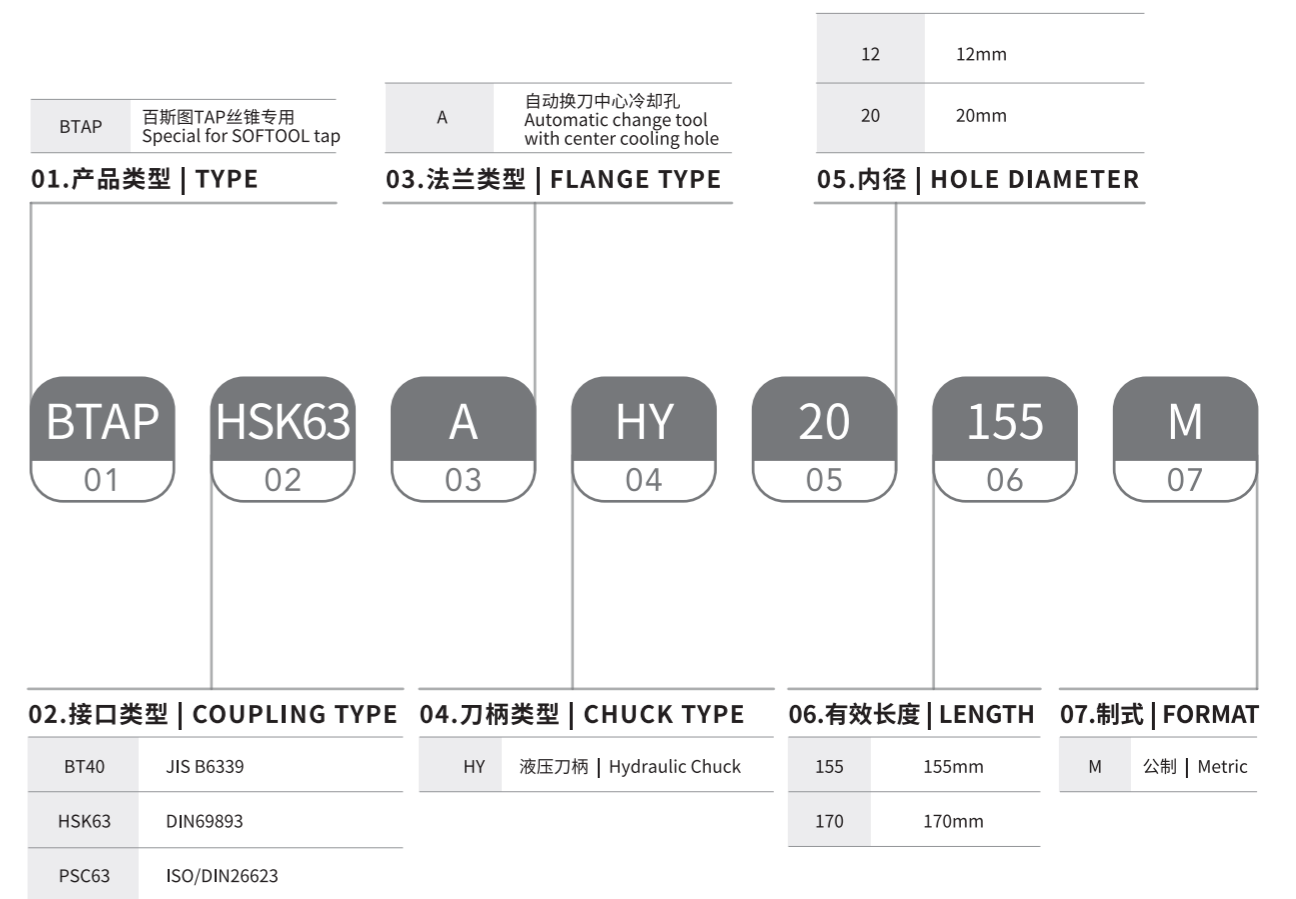
同步攻丝液压刀柄

SYNCHRO TAPPING CHUCKS

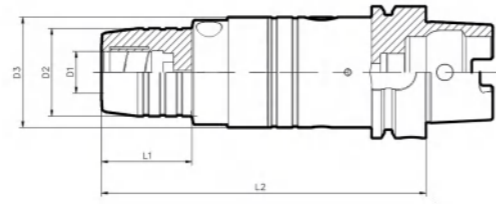
- 液压夹持，精度提高一倍；
- 夹持方便，效率提高一倍；
- 自动补偿，丝锥效率提高一倍；
- 降低了机床精度的要求，对机床同步误差。
- High Accuracy;
- Easy Clamping;
- Long Tool Life.



同步攻丝液压刀柄命名方式 Synchro Tapping Chucks Naming And Coding Rules



同步攻丝液压刀柄 Synchro Tapping Chucks



- D12内孔刀柄可以使用M3-M12丝锥
- D20内孔刀柄可以使用M8-M20丝锥
- 刀具跳动装配后配合跳动≤0.015mm

- D12 for Tap M3-M12
- D20 for Tap M8-M20
- The Tap runout is smaller than 0.015mm

技术参数 | Technical parameters

单位 | Unit: mm

订货号 Ordering code	D1	D2	D3	L1	L2	水嘴 Nozzle	重量 m (kg)
BTAPBT40AHY12155M	12	32	52.8	42	155	-	2.54
BTAPBT40AHY12170M	12	32	52.8	57	170	-	2.63
BTAPBT40AHY20155M	20	42	52.8	43	155	-	2.67
BTAPBT40AHY20170M	20	42	52.8	58	170	-	2.83
BTAPPSC63AHY12155M	12	32	52.8	42	155	-	2.39
BTAPPSC63AHY12170M	12	32	52.8	57	170	-	2.49
BTAPPSC63AHY20155M	20	42	52.8	43	155	-	2.52
BTAPPSC63AHY20170M	20	42	52.8	58	170	-	2.68
BTAPHSK63AHY12155M	12	32	52.8	42	155	M18*1	2.21
BTAPHSK63AHY12170M	12	32	52.8	57	170	M18*1	2.31
BTAPHSK63AHY20155M	20	42	52.8	43	155	M18*1	2.34
BTAPHSK63AHY20170M	20	42	52.8	58	170	M18*1	2.49

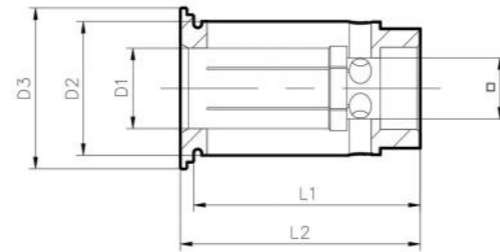
- 如需单独订购水嘴，请参照60页

- Nozzle need to be ordered separately. Please refer to P60

同步攻丝液压刀柄减径套命名方式
Synchro Tapping Chucks Reduction Bushes Naming And Coding Rules



同步攻丝液压刀柄减径套 Synchro Tapping Chucks Reduction Bushes



技术参数 | Technical parameters

单位 | Unit: mm

订货号 Ordering code	D1	D2	D3	□	L1	L2
ISL01200028MITD	2.8	12	16.5	2.1	29	31
ISL01200035MITD	3.5	12	16.5	2.7	29	31
ISL01200040MITJ	4	12	16.5	3.2	29	31
ISL01200045MITD	4.5	12	16.5	3.4	29	31
ISL01200050MITJ	5	12	16.5	4	29	31
ISL01200055MITJ	5.5	12	16.5	4.5	29	31
ISL01200060MITJ	6	12	16.5	4.5	29	31
ISL01200060MITD	6	12	16.5	4.9	29	31
ISL01200062MITJ	6.2	12	16.5	5	29	31
ISL01200070MIT	7	12	16.5	5.5	29	31
ISL01200080MITD	8	12	16.5	6.2	29	31
ISL01200080MITJ	8	12	16.5	6.5	29	31
ISL01200085MITJ	8.5	12	16.5	6.5	29	31
ISL01200090MITD	9	12	16.5	7	29	31
ISL01200100MITD	10	12	16.5	8	29	31

转下页 see next page →

同步攻丝液压刀柄减径套 Synchro Tapping Chucks Reduction Bushes

技术参数 | Technical parameters

单位 | Unit: mm

订货号 Ordering code	D1	D2	D3	□	L1	L2
ISL02000060MITJ	6	20	24	4.5	34	36
ISL02000060MITD	6	20	24	4.9	34	36
ISL02000062MITJ	6.2	20	24	5	34	36
ISL02000070MIT	7	20	24	5.5	34	36
ISL02000080MITD	8	20	24	6.2	34	36
ISL02000080MITJ	8	20	24	6.5	34	36
ISL02000085MITJ	8.5	20	24	6.5	34	36
ISL02000090MITD	9	20	24	7	34	36
ISL02000100MITD	10	20	24	8	34	36
ISL02000105MITJ	10.5	20	24	8	34	36
ISL02000110MITD	11	20	24	9	34	36
ISL02000120MITD	12	20	24	9	34	36
ISL02000125MITJ	12.5	20	24	10	34	36
ISL02000130MITJ	13	20	24	10	34	36
ISL02000140MIT	14	20	24	11	34	36
ISL02000150MITJ	15	20	24	12	34	36
ISL02000160MITD	16	20	24	12	34	36

配件清单 List of parts

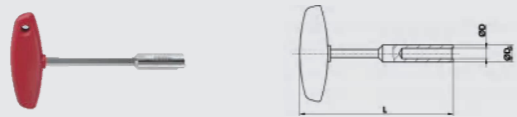
水嘴 | Nozzle

为HSK刀柄提供内部冷却液供给 | Provide internal coolant supply for HSK chucks



订货号 Ordering code	适用 Apply	D1	L1	L2	G
731300560051	HSK32	6	5.5	26	M10×1
731300560052	HSK40	8	7.5	29	M12×1
731300560053	HSK50	10	9.5	33	M16×1
731300560054	HSK63	12	11.5	36.5	M18×1
731300560055	HSK80	14	13.5	38.5	M20×1.5
731300560056	HSK100	16	15	43.5	M24×1.5

水嘴扳手 | Nozzle key



订货号 Ordering code	适用 Apply	D	D2	L
720309000217	HSK32	6	9	107
731300560038	HSK40	8	11	111
731300560039	HSK50	10	15	120
731300560046	HSK63	12	17	122
731300560047	HSK80	14	18.5	126
731300560048	HSK100	16	22	141

配件清单 List of parts

过水顶丝 | Back up screw

装刀长度调节顶丝，带通孔 | Length-adjusting screw with through hole



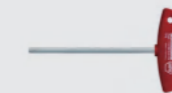
订货号 Ordering code	适用 Apply	G
730101061406	D6	M5
730101061416	D8	M6
730101061417	D10	M8×1
730101061412	D12	M8×1
730101060074	D14	M10×1
730101061411	D16,D18	M12×1
730101060057	D20	M12×1
730101061405	D25,D32	M16×1

锁紧顶丝 | Locking screw

对柱塞进行施压 | Apply pressure to the plunger
固定的扭矩以达到合理的压力 | Fixed torque for reasonable pressure

订货号 Ordering code	G
730101060101	M8×10
730101062023	M10×10
730101067007	M10×12
730101060320	N12×14

T型扳手 | T-type key



订货号 Ordering code	名称 Name
720301261020	T柄内六角扳手4.0X100mm Allen key with T handle 4.0X100mm
720301261825	T型内六角扳手D5*100 Allen key with T handle D5*100
720301261826	T型内六角扳手D6*100 Allen key with T handle D6*100